



# Carmen

GEORGES BIZET



**OPERA**  
THEATER 15/16



# JACOBS SCHOOL OF MUSIC

INDIANA UNIVERSITY

Bloomington

*Five Hundred Twenty-Second Program of the 2015-16 Season*

---

Indiana University Opera Theater

presents

as its 447<sup>th</sup> production

## *Carmen*

Opéra Comique in Four Acts

Music by

Georges Bizet

Libretto by

Henri Meilhac and Lucovic Halévy

Based on the novel by Prosper Mérimée

David Effron, *Conductor*

Jeffrey Buchman, *Stage Director*

Robert O'Hearn, *Set and Costume Designer*

Dana Tzvetkov, *Costumer*

Patrick Mero, *Lighting Designer*

Walter Huff, *Chorus Master*

Brent Gault, *Children's Chorus Master*

Rosa Mercedes, *Dance Choreographer*

Matt Herndon, *Fight Choreographer*

Gary Arvin, *Diction Coach*

Daniela Siena, *Supertitles Author*

---

Musical Arts Center

Friday Evening, February Twenty-Sixth

Saturday Evening, February Twenty-Seventh

Friday Evening, March Fourth

Saturday Evening, March Fifth

Seven-Thirty O'Clock



## Cast of Characters

	Friday, February 26 Saturday, March 5	Saturday, February 27 Friday, March 4
Don José . . . . .	Trey Smagur	Justin Stolz
Carmen . . . . .	Courtney Bray	Patricia Illera
Micaëla. . . . .	Yuji Bae	Claire Lopatka
Escamillo . . . . .	Ross Coughanour	Jianan Huang
Zuniga . . . . .	Andrew Richardson	Jeremy Gussin
Moralès . . . . .	Mark Billy	Teofil Munteanu
Frasquita . . . . .	Emma Donahue	Madeline Ley
Mercédès . . . . .	Marianthi Hatzis	Chelsea DeLorenz
Le Dancaïre . . . . .	Benjamin Seiwert	Andres Acosta
Le Remendado . . . . .	Max Zander	Darian Clonts
Supernumeraries. . . . .	Zach Decker, Kara Dual-Fowler, Norm Holy Antonio Houck, Moses Mayabilo, Ben Monticue Jim Nelson, Andrew Nine, Tod Wicks	

## Opera Chorus

Walter Huff, *Chorus Master*

<i>Women</i>	<i>Women (cont.)</i>	<i>Men</i>	<i>Men (cont.)</i>
Emily Baker	Annika Mauss	Nizel Austin	Alonza Lawrence
Joanna Burke	Elizabeth McConnaughey	Milan Babic	Ji Lu
Annie Chester	Kaitlyn McMonigle	Bradley Bickhardt	Gabriel Ma
Tiffany Choe	Lauren McQuistin	Mark Billy	Caleb Morgan
Taylor del Vecchio	Marlen Nahhas	Michael Day	Ben Rardin
Alyssa Dessoye	Christina Nicastro	Noah Donahue	Jacob Rhoad
Monica Dewey	Kirstin Olson	Thomas Drew	Tislam Swift
Christina Dragnea	Amanda Perrera	Quinn Galyan	Michael Vlach
Kaitlyn Johnson	Bridget Ravenscraft	Steven Garza	Stephen Walley
Geuna Kim	Esther Schneider	Glen Hall	Lucas Wassmer
Lena Kornreich	Daisy Schön	Michael Hyatt	
Gretchen Krupp	Ann Marie Theis	Benjamin Jones	
Natalie Martell	Tiffany Williams	Brian Joy	

## Children's Chorus

Brent Gault, *Chorus Master*  
Sarah Miller, *Assistant Chorus Master*

Samira Abdul-Hakim	Leanna Gladson	Naina Prabhakar	Gyeongmin Seo
Marielle Berin	Desiree Huntington	Alayna Przybyla	Anabelle Thomassen
Grace Buehler	Callum Miles	Claire Przybyla	Fiona Weaver
Helen Christ	Niccolo Miles	Noel Przybyla	
Nathaniel Cox-Thurmond	Jessica Parrish	Jake Sater	

## *A Message from Our Sponsor*

### **Old National Wealth Management**

Old National Wealth Management is pleased to advance the mission of the Jacobs School of Music by supporting time-honored works like the IU Opera Theater's production of *Carmen*. At Old National Wealth Management, we understand the importance of investing in efforts that enrich life. We would like to thank the Jacobs School of Music, all of the performers, as well as the contributors who have made this production possible.

### **About Old National Wealth Management**

Old National has been offering trust and wealth management services since 1907. With \$8 billion of assets under management, Old National Wealth Management ranks among the top 100 fiduciary management firms in the U.S. Families, corporations, and foundations experience local, personal service from a dedicated team of seasoned professionals. Our team structure offers the unique advantage of long-term continuity of service. ONWM is a trusted financial partner assisting with investment management, financial planning, retirement planning, and trust services. Old National Wealth Management is a part of the Old National Bancorp family of companies, the largest financial services company headquartered in the state of Indiana.

## Synopsis

### Nineteenth-Century Seville, Spain

#### Act I

Soldiers and townspeople mill around in a square in Seville. A young peasant girl, Micaela, asks the soldiers if they have seen Don José. Telling her he'll be back soon, they try to persuade her to stay with them, but she declines. The relief soldiers, including Don José, arrive. Factory bells ring, and a group of cigarette girls arrives to return to work, including the popular gypsy beauty Carmen. She focuses her attention on Don José, who pretends not to notice. Before leaving, she seductively tosses a flower at him. Alone, Don José recovers the flower and reflects on Carmen's charms. Micaela finds him and delivers both a letter and a kiss from his mother, who asks her son to marry Micaela. Don José promises his love and fidelity to Micaela, despite the temptations of Carmen. A ruckus erupts from the cigarette factory. Carmen has injured another woman, and the officer Zuniga commands Don José to escort Carmen to prison. But Don José succumbs to her charms. He agrees to a rendezvous and lets Carmen escape.

#### Act II

At Lillas Pastia's inn, Carmen and her friends Frasquita and Mercedes consort with Zuniga and other soldiers. A group of revelers arrives, celebrating Escamillo, the illustrious bullfighter. The crowd cheers as Escamillo boasts of his victories. He notices Carmen, but she remains indifferent. Zuniga, also smitten, tells Carmen that he plans to return to the inn later to visit her. When the crowd disperses, the smugglers Remendado and Dancairo try to enlist the aid of Carmen, Frasquita, and Mercedes. Mercedes and Frasquita agree to help them smuggle contraband, but Carmen, expecting Don José, wants to stay at the inn. Don José arrives, and Carmen dances for him. But distant bugles signal him to return to his quarters, and he prepares to leave. Carmen mocks his obedience and encourages him to run away with her and lead the free gypsy life. Don José remains unconvinced until Zuniga returns to the inn seeking Carmen. In a jealous rage, Don José defies his officer's orders to leave. As the smugglers pounce on Zuniga and escort him out of the inn, Don José has no choice but to remain with the gypsies.

#### Act III

At the mountain hideout of the smugglers, Don José longs for his mother, who still believes him an honest man. Carmen taunts him and urges him to leave, but he refuses. Frasquita and Mercedes tell their fortunes with a deck of cards. When Carmen takes her turn, the cards foretell death for her and Don José. The gypsies set off to smuggle contraband, leaving Don José behind to guard the camp. Micaela arrives at the mountain hideout searching for Don José and hides among the rocks. Escamillo approaches the camp looking for Carmen. He and Don José exchange words and begin to fight. But the smugglers return in time to stop Don José from wounding Escamillo, who invites them all to the bullfight in Seville. Her hiding place discovered, Micaela begs Don José to return home to his mother, who is dying. Despite his violent jealousy, Don José leaves with Micaela.



# André Watts

THURSDAY, APRIL 14, 11AM  
FRIDAY, APRIL 15, 8PM  
SATURDAY, APRIL 16, 5:30PM

*Hilbert Circle Theatre  
Downtown Indianapolis*

GILBERT VARGA, CONDUCTOR  
ANDRÉ WATTS, PIANO

**FRANCK** *Psyché et Eros*

**MACDOWELL** Piano Concerto No. 2

**WAGNER** *Tristan und Isolde*: Prelude & Liebestod

**TCHAIKOVSKY** *Romeo and Juliet*

— TICKETS FROM \$15! —

TITLE SPONSOR: *Lilly*

## THE LEGENDARY MENAHEM PRESSLER

THURSDAY, MAY 5, 11AM  
SATURDAY, MAY 7, 7PM

*Hilbert Circle Theatre  
Downtown Indianapolis*

ROBERTO ABBADO, CONDUCTOR  
MENAHEM PRESSLER, PIANO

**BRAHMS** *Tragic Overture*

**MOZART** Piano Concerto No. 27

**SCHUMANN** Symphony No. 2



TITLE SPONSOR: *Lilly*

## Act IV

At the bullfight, a crowd gathers to watch the procession of toreadors. Escamillo and Carmen arrive together. Mercedes and Frasquita warn Carmen that Don José is lurking about. Carmen, unafraid, waits alone for Don José. He approaches and begs her to leave with him. She insists that their affair is over, that she does not love him anymore, and that she now loves Escamillo. As Don José's demands become more desperate, Carmen throws the ring he once gave her at him. Don José murders Carmen, while the crowd inside the bullring cheers Escamillo.

### Program Notes

by Bret McCandless

(*Musicology Ph.D. Student*)

*Carmen* has seeped into the public imagination through its riveting melodies, dynamic storytelling, and sensational ending. Based on the novella by Prosper Mérimée and set to music by Georges Bizet on a libretto by the celebrated Henri Meilhac and Ludovic Halévy, *Carmen* remains one of the most performed operas in the repertoire: the Metropolitan Opera performed it for the one-thousandth time in 2015. Even if this is your first time seeing it in the opera house, you probably are familiar with many of the songs and the tragic ending. The story of the downfall of the naïve soldier Don José due to his irreconcilable desire for the gypsy Carmen has been adapted for numerous cartoons, films, and stage versions. Bizet's lively music, which the composer described as "full of color and melody," alternates between several styles for the different characters: playful children's music, music of the utmost sincerity and piety for Micaëla, pompous and preening music for the toreador Escamillo, Hispanic tunes and dance music for Carmen, and rapturously lyric music for Don José. It is this varied and dazzling music that has continued to attract audiences for generations.

Despite its current international acclaim, the opera's initial run was not so successful. *Carmen* premiered at the Opéra-Comique in Paris on March 3, 1875, after months of delays in rehearsal. Earlier that very day, Bizet's appointment as a Chevalier of the Legion of Honour was announced. Many French musical celebrities were there on opening night, and the audience seemed delighted with the first act. All seemed to portend success. But as the plot continued with Don José's increasing desire for the tempting Carmen despite her growing indifference, the audience became dissatisfied with the opera. The critics were disappointed and upset not only with Bizet's musical style, but also with the amorality of the heroine and her penchant for picking up men and flinging them aside on a whim. Critics also judged the opera too realistic and depressing due to the staged murder of Carmen and Don José's unredeemed descent from bourgeois respectability, especially within the context of the usual *opéra comique* fare of romantic tales with happy endings suitable for family audiences. The chorus was especially dismayed at the demand for realism, as they were told to act like individuals onstage, which upset the norm of merely standing in a line and singing to the audience. In this first run, *Carmen* often played to half-empty houses. A small boost to ticket sales came only after Bizet's early death at the age of 37 on the night of the thirty-third performance; he died believing his work to be a failure.





She says she  
wants to be a  
singing star!

**Helping people achieve dreams and goals is our priority...everyday.**

With the right team of financial professionals by your side, you can open and grow a business, purchase real estate, enjoy a fulfilling retirement, and even give your rising star higher education opportunities.

**Talk to Bloomington's strong team of financial professionals at German American.**



Mark Franklin, Julie Donham, Jane Thoma, Jerry Towle, Everett Southern, Mike Hayes



**German American**

Banking | Insurance | Investments  
Member FDIC

[germanamerican.com](http://germanamerican.com) • (812)355-2265





However, the story of *Carmen* does not end with this tepid French reception, as a modified version of the opera quickly rose to prominence. In October 1875, *Carmen* was staged at the Vienna Court Opera. The original Paris version had dialogue between the musical numbers, the defining feature of *opéra comique*. For Vienna, however, sung dialogue written by Bizet's friend Ernest Guiraud replaced the spoken dialogue in order to create a "grand opera," which also included a ballet in the second act based on Bizet's *L'Arlésienne Suite*. While the ballet has often been discarded, the version of *Carmen* with sung dialogue is the version audiences outside of France know today, though stagings with the original dialogue have become more popular recently. *Carmen*'s success originates in this international reception, where it was enthusiastically received by personalities as diverse as Wagner, Brahms, Tchaikovsky, Otto von Bismarck, and Nietzsche, among others. In fact, it was *Carmen* that inspired Nietzsche to reject Wagner's aesthetics of "brutal sound" for Bizet's "graceful and light" orchestration. In addition, Nietzsche singles out Bizet's tunes and popular song forms, devoid of Wagner's "endless melody" style of composition. Perhaps it is telling that Don José's meandering, lyric music comes closest to the aesthetics of endless melody, and it is his journey into insatiable lust that leads to his and Carmen's ultimate demise. It will also lead to Don José's own unstaged execution, which many early audience members likely knew from the novella.

Even for audiences who were unfamiliar with the story going in to the opera, Don José's fate of unyielding, and fatal, attraction to Carmen is known from the very beginning. Throughout the opera, Bizet uses a musical motif—often called the "fate motif"—to comment on Don José's attraction to Carmen. This figure emerges at the very end of the prelude to the first act when, after the active, celebratory music that will accompany the victorious toreador later in the opera, the prelude suddenly stops. Out of this void comes a shimmering minor chord, followed by a short, but forceful utterance by the cellos. The melodic characteristics of this fate motif evoke images of anguish and the Orient, and in this context, become musical symbols of the exotic gypsy Carmen. The cellos play the motif in different keys, but it never resolves, instead exploding into a highly dissonant chord. It returns throughout the opera whenever Carmen and Don José have a noteworthy interaction: when Carmen drops her flower for Don José in Act I, when he returns to her after being imprisoned in Act II, when Carmen foresees death for them both while fortunetelling in Act III, and immediately before and after he kills her in Act IV. By outlining the course of the drama in the prelude and weaving this unifying motif in between memorable popular songs, Bizet creates an engaging and dynamic opera.

Despite its captivating music, the opera's conclusion can prove unsettling for modern audiences. Scholars have questioned some of the gendered aspects of the opera, debating whether Carmen's death is necessary and whether this has any effect on the ethics of continuing to perform the opera. Some ascribe Carmen's death to "fate," as the opening motif suggests, and argue that Carmen embraces her fate because it is inevitable. Others contend that the ending serves to reassert patriarchal control over Carmen's sexual transgressions and her ethnic Otherness. Bizet's music may even evoke desire in the listener for Don José to dispatch of Carmen in order to resolve the chromatic tension. In a more nuanced reading, Don José is the psychological victim,

**CARDINAL**  
STAGE COMPANY



**LOVE, LOSS,**  
— AND —  
**WHAT I WORE**

**MAR 31 - APR 10**

— AT THE —  
IVY TECH WALDRON AUDITORIUM

Presented in support of



**FIND TICKETS TODAY!**

[cardinalstage.org](http://cardinalstage.org) / 812.336.9300

as there is no place in his culture to indulge in the freedom that *Carmen* inspires, and this frustration ultimately results in violence. No matter the interpretation, *Carmen* will always end in the heroine's violent death, and it is the audience who must decide whether the pleasure derived from the magnificent music will outweigh the ethical implications of Bizet's magnum opus.

## Artistic Staff

### Conductor



**David Effron's** 50-year career has included appearances with major symphonies and opera companies around the globe. He has conducted 105 operas and most of the standard symphonic works. For 18 years, he was on the conducting staff of the New York City Opera, where he conducted many performances, not only in New York, but also with the City Opera residencies in Los Angeles and Washington, D.C. He has

been the music director of the Youngstown Symphony Orchestra and the artistic director of the Central City (Colo.) Opera and the Brevard Music Center (N.C.). For 10 years, he was the general music director of the Heidelberg (Germany) Castle Festival. After his tenure as music director of the Music School Festival Orchestra in Chautauqua, N.Y., the David Effron Fellowship was established. He taught at the Curtis Institute of Music and, for 21 years, was head of the orchestral program at the Eastman School of Music. Since 1998, he has been an active conductor at the IU Jacobs School of Music, where he is a professor of music in the Orchestral Conducting Department. Effron was the conductor of the Grammy Award-winning recording of Copland's *Lincoln Portrait* narrated by William Warfield. His discography also includes a Pantheon recording with soprano Benita Valente, which won the German Record Critics' Award. He earned degrees from the University of Michigan and Indiana University. He was an assistant to Maestro Wolfgang Sawallisch at the Cologne (Germany) Opera House. He has been a Fulbright Scholar and a recipient of a Rockefeller Foundation Grant. He was named Musician of the Year by the National Federation of Music Clubs and was awarded an honorary doctorate from North Carolina State University.

### Stage Director



*Opera News* calls director Jeffrey Marc Buchman "a formidable talent," and the *Miami Herald* claims "Buchman has mastered an art beyond the powers of many directors." Last season, he created the world premiere of Carson Kievmán's new opera, *Intelligent Systems*, which was named "Most innovated innovative? production of 2015" by the *Miami Herald*.

His busy season also included a return to Indiana University for *La Bohème*, a new production of *Gianni Schicchi* and *Suor Angelica* for University of Miami, *Così fan tutte* for the Brevard Music Festival, *Don Giovanni* for the Miami Summer Music Festival, Haydn's *Lo Speziale* for the New World School of the Arts, *Manon Lescaut* for Mobile Opera, and *Il Barbiere di Siviglia* for Syracuse Opera. In addition, he created a ground-breaking multimedia arena event for the Grand Rapids Symphony that included over 1,500 performers performing with 3D motions graphics.

IU THEATRE  
presents

theatre.indiana.edu

OCCUPANTS  
a new play  
by Mauricio Miranda



In the 2013-14 season, he created new productions of *La Traviata* for Indiana University, *La tragédie de Carmen* for Syracuse Opera, *Don Giovanni* for UCLA, *Il Barbiere di Siviglia* for the Orlando Philharmonic, *La Cenerentola* for Green Mountain Opera Festival, *Le Nozze di Figaro* for the Miami Summer Music Festival, *L'Elisir d'Amore* for Cincinnati Conservatory of Music's Summer Program, and *No Exit* for Florida Grand Opera, which was named "One of the best and brightest of 2014" by the *Miami Herald*. Buchman also created the world premiere of Carson Kievmán's innovative chamber opera, *Fairy Tales: Songs of the Dandelion Woman*. Other recent highlights include Buchman's debut with Atlanta Opera—directing *Carmen*—and a triumphant return to Florida Grand Opera for new productions of *The Magic Flute* and *Rigoletto*, *L'Elisir d'Amore* for Toledo Opera, *Roméo et Juliette* for Intermountain Opera, *Turandot* for Mobile Opera, *South Pacific* for Anchorage Opera, *Il Trovatore* and *Faust* for Opera Naples, *Hansel and Gretel* for Sarasota Opera, and *Cold Sassy Tree* for Sugar Creek Symphony & Song.

His work with young singers has been extensive. He has directed young artists at Seattle Opera, Florida Grand Opera, Tulsa Opera, Sarasota Opera, Chautauqua Opera, UCLA, Cincinnati Conservatory of Music's Summer Program, Brevard Music Festival, Indiana University, Miami Summer Music Festival, and the New World School of the Arts.

Buchman began his music studies at the Baltimore School for the Arts and later at the Interlochen Arts Academy. He earned a Bachelor of Music in Opera degree from the Boston Conservatory of Music and a Master of Music in Voice degree from the Peabody Conservatory of Music in his native city of Baltimore, Md. He studied German at the Goethe Institut in Prien am Chiemsee, Germany, and Spanish at the Instituto Cervantes. He trained in the Young Artist Program of the Florida Grand Opera, where he later was honored with the company's Evelyn P. Gilbert Award, and also in the Studio and Apprentice Artist programs of Central City Opera, where he was received its Studio Artist of the Year award. Winner of the prestigious Luciano Pavarotti International Voice Competition, Buchman began his work in opera as an acclaimed singer noted for his ability to merge acting and singing. Other prizes include first prize in the National Voice Competition of the National Society of Arts and Letters and a Richard F. Gold career grant from the Shoshana Foundation.

## Set and Costume Designer



**Robert O'Hearn** earned his bachelor's degree from Indiana University in 1943. Now retired, as principal designer for IU Opera and Ballet Theater, O'Hearn designed sets and costumes for more than 40 productions and taught in the Opera Studies program for many years. Prior to coming to IU, he designed sets and costumes for the Metropolitan Opera, Vienna Staatsoper, Vienna Volksoper, Hamburg Staatsoper, New York City Opera, Greater Miami Opera, Houston Grand Opera, Santa Fe Opera, American Ballet Theatre, New York City Ballet, San Francisco Ballet, and Ballet West. O'Hearn served as professor for the Studio and Forum of Stage Design in New York from 1968 to 1988. He has given lectures and classes at Carnegie Mellon, Brandeis, and Penn State University. In 2005, he received the Robert L. B. Tobin Award for Lifetime Achievement in Theatrical Design.



# #GetItIU

**Be a part of the arts.**

The IDS is a proud supporter of the local arts community. Follow the arts scene and find other events at [idsnews.com](http://idsnews.com).

We hope you enjoy the performance.



## Lighting Designer



**Patrick Mero** is the head of lighting for IU Opera and Ballet Theater. He has designed the lighting for *La Traviata*, *H.M.S Pinafore*, *Le Nozze di Figaro*, *Werther*, *Falstaff*, *Xerxes*, *Don Giovanni*, *Albert Herring*, *La Bohème*, *Tosca*, *L'Italiana in Algeri*, *West Side Story*, *Il Barbiere di Siviglia*, *Suor Angelica*, *Gianni Schicchi*, and *Alcina*. He has also done extensive design work for the Jacobs School of Music Ballet Department, the IU

African American Art Institute's Dance Ensemble, and Cardinal Stage Company. In addition to his work in Bloomington, he has worked at Spoleto Festival USA. Mero originally hails from Charleston, S.C., but calls Bloomington home.

## Chorus Master



Along with his responsibilities as professor of choral conducting and faculty director of opera choruses at the Jacobs School of Music, **Walter Huff** continues his duties as Atlanta Opera chorus master. He has been chorus master for The Atlanta Opera since 1988, preparing the chorus in more than 120 productions and receiving critical acclaim in the United States and abroad. Huff earned his Bachelor of Music degree from the

Oberlin Conservatory and his Master of Music degree from Peabody Conservatory (Johns Hopkins). He studied piano with Sarah Martin, Peter Takács, and Lillian Freundlich, and voice with Flore Wend. After serving as a fellow at Tanglewood Music Center, he received Tanglewood's C. D. Jackson Master Award for Excellence. Huff served as coach with the Peabody Opera Theatre and Washington Opera, and has been musical director for The Atlanta Opera Studio, Georgia State University Opera, and Actor's Express (Atlanta, Ga. ).

**Bell Trace**  
applauds the Opera  
for enriching our  
resident's lives  
with the gift of music.

*"Music has no limits,  
borders or ages."*  
~ Thalia

**BELL TRACE**  
Exceptional Care,  
Extraordinary Caring

812-332-2355 (BELL)  
www.BellTrace.com

Bring  
Art  
to the  
World

Study Arts Administration at the  
IUB School of Public and  
Environmental Affairs





# Spring Ballet

*FOUR FACES OF BALANCHINE*

MARCH

25 7:30 PM

26 7:30 PM

*RAYMONDA VARIATIONS*

*TARANTELLA*

*ELEGIE*

*SERENADE*



**BALLET**  
THEATER 15/16

**BUY YOUR TICKETS NOW!**

MAC Box Office: (812) 855-7433  
[music.indiana.edu/operaballet](http://music.indiana.edu/operaballet)

He also has worked as chorus master with San Diego Opera. He served on the faculty at Georgia State University for four years as assistant professor, guest lecturer, and conductor for the Georgia State University Choral Society. Recently, he was one of four Atlanta artists chosen for the first Loridans Arts Awards, given to Atlanta artists who have made exceptional contributions to the arts life of Atlanta over a long period of time. While serving as chorus master for The Atlanta Opera, Huff has been the music director for The Atlanta Opera High School Opera Institute, a nine-month training program for talented, classically trained high school singers. He has served as chorus master for IU Opera Theater productions of *Don Giovanni*, *The Merry Widow*, *Akhmaten*, *Le Nozze di Figaro*, *Lady Thi Kihn*, *H.M.S. Pinafore*, *La Traviata*, *The Italian Girl in Algiers*, *La Bohème*, *The Last Savage*, *South Pacific*, *Die Zauberflöte*, *Il Barbiere di Siviglia*, *Dead Man Walking*, and *Die Fledermaus*. In June 2015, Huff served as choral instructor and conductor for the Sacred Music Intensive, a workshop inaugurated by the organ and choral departments at the Jacobs School. In addition, he maintains a busy vocal coaching studio in Atlanta.

### Children's Chorus Master



**Brent Gault** has taught elementary and early childhood music courses in Texas, Wisconsin, Connecticut, Pennsylvania, and Indiana. He specializes in elementary general music education, early childhood music education, and Kodály-inspired methodology. Gault also has training in both the Orff and Dalcroze approaches to music education. He has presented sessions and research at conferences of the American

Orff-Schulwerk Association, Dalcroze Society of America, International Kodály Society, International Society for Music Education, Organization of American Kodály Educators, and MENC: The National Association for Music Education. In addition, he has served as a presenter and guest lecturer for colleges and music education organizations in the United States and China. Articles by Gault have been published in various music education periodicals, including the *Bulletin of the Council for Research in Music Education*, *Journal of Research in Music Education*, *Music Educators Journal*, *General Music Today*, *Kodály Envoy*, *Orff Echo*, and *American Dalcroze Journal*. In addition to his duties with the Jacobs School Music Education Department, Gault serves as the program director for the Indiana University Children's Choir, where he conducts the Allegro Choir. He is a past president of the Organization of American Kodály Educators.

### Dance Choreographer



Born in Barcelona, Spain, **Rosa Mercedes** is an internationally acclaimed dancer and choreographer in flamenco, escuela bolera, classical Spanish, and regional dance. Trained by many of the world's great Spanish dance masters, she expanded her training to include dance styles such as ballet, jazz, historic, and modern dance, which produced in her a style that combines the power and fire of flamenco with a lyricism and line rarely seen in Spanish dance. Hailed by *Dance Magazine* as "a virtuoso," her talents have been featured by dance companies, dance festivals, and symphony orchestras throughout the United States and Europe.

As a soloist and principal dancer, she has received great critical acclaim performing throughout the United States, Europe, South America, and Canada with companies including María Benítez's Teatro Flamenco, Compañía Flamenca de Carmen Cortés, Ballet Español de Lucía Real y El Camborio, Ballet Español de Madrid, Zorongo Flamenco Dance Theatre, and Ballet Español Rosita Segovia. She was also rehearsal director and choreographer with the companies of both Maria Benitez and Rosita Segovia.

Mercedes has enjoyed an extensive career in opera and zarzuela under conductors such as James Levine, Marco Armiliato, and Julius Rudel, and alongside major singing talents such as Luciano Pavarotti, Plácido Domingo, Agnes Baltsa, Denyse Graves, and José Carreras. Her work in opera began at the Liceu in Barcelona and led her to being featured as a principal dancer and later as a choreographer with companies such as the Metropolitan Opera, Opera di Roma, Seattle Opera, Atlanta Opera, Michigan Opera Theatre, Dallas Opera, Baltimore Opera, Cincinnati Opera, Florentine Opera, Palm Beach Opera, Austin Lyric Opera, Florida Grand Opera, Opera Lyra Ottawa, Syracuse Opera, Green Mountain Opera, Brevard Music Festival, Tulsa Opera, and many others.

Her versatility in a wide variety of dance styles is demonstrated in her vast repertoire, which includes *Lucia de Lammermoor*, *Il Barbiere di Siviglia*, *Die Zauberflöte*, *Aida*, *La Gioconda*, *Turandot*, *La Traviata*, *Carmen*, *Rigoletto*, *Don Quichotte*, *Don Giovanni*, *Il Trovatore*, *Ainadamar*, *The Passenger*, *Così fan tutte*, *Le Nozze di Figaro*, *La Cenerentola*, *Faust*, *Ballo in Maschera*, *Die Fledermaus*, *Salome*, *The Merry Widow*, *Coronazione di Poppea*, *Roméo et Juliette*, *Madama Butterfly*, *La Vida Breve*, and *Samson et Dalila*.



**VOCAL Arts STUDIO**

with Meredith Kiesgen Schilling

- Private Singing Lessons
- Master Classes
- Audition Preparation

(812) 219-7865

[www.VocalArtsStudio.com](http://www.VocalArtsStudio.com)

**Find out why so many music lovers choose Meadowood...**

\* IU JSOM Student  
Xuan Li



**MEADOWOOD**

FIVE STAR SENIOR LIVING

2455 Tamarack Trail Bloomington, IN

(812) 336-7060

[www.meadowoodretirement.com](http://www.meadowoodretirement.com)

Practice recital site for the Jacobs School of Music.

Other career highlights include performances with Savion Glover in Miami on Tap, a gala for UNICEF alongside Audrey Hepburn and Liza Minelli, a special collaboration for the production *Tango* with Armando Orzuza and Daniela Arcuri (of *Evita* and *Tango Pasión*), performances with Luciano Pavarotti, Plácido Domingo, and José Carreras in the Three Tenors Gala with the Metropolitan Opera, concerts with the Gypsy Kings and Sara Montiel, and the internationally televised program *Premios Lo Nuestro* with David Bisbal.

Mercedes is a recipient of several awards, including the Dance Miami Choreographers Fellowship and the ACCA Critics Choice Award in dance. She serves on several grant panels and is a dance panelist and master teacher for the National Foundation for Advancement in the Arts. She has over 30 years of teaching experience and is highly sought after as a master teacher around the world. She also specializes in master classes in movement for singers as well as coaching singers in specific role preparation.

As artistic director of Duende Ballet Español, she created an eclectic repertoire of over 20 works that honor Spain's music, poetry and richly varied dance styles, embracing innovation while preserving and remaining true to Spanish dance traditions.

## Fight Choreographer



**Matt Herndon** is an advanced actor combatant with The Society of American Fight Directors, a Bloomington native, and a graduate of IU (B.A. in Theatre and Drama, 2011). He has choreographed the violence for several local productions, including *Così fan tutte* and *Dead Man Walking* for IU Opera Theater; *Billy Witch*, *She Kills Monsters*, and *Mad Gravity* for the Bloomington Playwrights Project; *king oedipus*, *Macbeth*, *Oleanna*, and *The Rimers of Eldritch* for Ivy Tech Theatre; *The Lieutenant of Inishmore* for University Players; *The Crucible* and *Waiting for Lefty* for Bloomington High School North; *Sonia Flew* for Jewish Theatre of Bloomington; and IU independent productions of *Sunday on the Rocks*, *Closer*, and *Hamlet*. Herndon has also served as the stunt coordinator for several local short films, including *Disdain*, *Daystime*, *Caligo*, *Sequela*, *Team Inspire*, *Born Again*, and *Pilgrimage*.

## Diction Coach



**Gary Arvin** is currently associate professor of vocal coaching, repertoire, and diction at the Jacobs School of Music. Previous credits with IU Opera Theater include serving as diction coach for recent productions of *Werther*, *Cendrillon*, *Faust*, *Roméo et Juliette*, and *The Light in the Piazza*. Before joining the faculty at Indiana University, Arvin was a vocal coach and assistant conductor for Houston Grand Opera, Cincinnati Opera, and Santa Fe Opera, and taught at the American Institute of Musical Studies in Graz, Austria. As a Fulbright Scholar, he studied at the Hochschule für Musik und darstellende Kunst in Vienna after earning degrees in voice and languages from IU and in vocal coaching from the University of Illinois. As a collaborative pianist with singers, he has appeared in recital throughout the United States, Austria, Germany, Czechoslovakia, Finland, and Korea, and distinguished himself as a pianist-collaborator both here and abroad for Gérard Souzay in French *mélodies*, Hans Hotter in German lieder, and Sir Peter Pears in the vocal works of Benjamin Britten. Arvin has recorded for ORF (Austria), National Radio of Finland, National Radio of the Czech Republic, and Sung-Eun Records (Korea).

## Supertitle Author



**Daniela Siena** brings many years of experience in teaching Italian diction and language to singers. She was introduced to operatic diction by Boris Goldovsky, who was seeking a native speaker without teaching experience to work with singers according to his own pedagogical principles. Siena went on to teach in a number of operatic settings (among them, the Curtis Institute of Music, Metropolitan Opera, New York City Opera, and Seattle Opera). Over the years, she worked with a number of well-known singers, including Samuel Ramey, Justino Díaz, Carol Vaness, Wolfgang Brendel, June Anderson, Gianna Rolandi, and Jerry Hadley. The conductors, coaches, and stage directors with whom she has worked include Otto Guth, Max Rudolf, Edoardo Müller, David Effron, Arthur Fagen, Anthony Pappano, Anthony Manoli, Terry Lusk, Dino Yannopoulos, Tito Capobianco, Andrei Șerban, John Cox, and John Copley. At New York City Opera, Siena worked closely with Beverly Sills—as her executive assistant, as a diction coach, and as the creator of English supertitles for a dozen operas. More recently, she worked for two years as a coach for the Young Artists Program of the Los Angeles Opera and, for the past six years, she has taught in Dolora Zajick's summer Institute for Young Dramatic Voices. Born in Florence, Italy, to an Italian mother and a Russian émigré father, Siena arrived in the United States at age seven. She received a B.A. from Sarah Lawrence College and, in her twenties, worked for two years in Italy as secretary to the president of the Olivetti Company. Many years later, she continued her education, earned a master's degree, and became licensed as a psychotherapist by the state of California, where she practiced for 15 years. The mother of two grown children, she moved to Bloomington to be near her son, who lives here with his wife and two young daughters.

**EVERYTHING IN ITS PLACE**  
THE LIFE AND **SLIMES** OF MARC SUMMERS  
BY ALEX BRIGHTMAN  
WITH MUSIC BY DREW GASPARINI  
STARRING MARC SUMMERS

**APRIL 1 – 16 @ 7:30**  
newplays.org 812.323.3020

**BPP**



## Cast

### Don José



**Trey Smagur** is a 25-year-old tenor hailing from Clarkesville, Ga. Last year, he was awarded an encouragement award at the Southeastern Regional Metropolitan Opera Council Auditions. Last summer, Smagur was an apprentice artist at the Des Moines Metro Opera Company, where he will be returning this summer to cover Des Grieux in Massenet's *Manon*. He currently studies voice performance with Carlos Montané at the Jacobs School of Music in pursuit of a performer diploma and was awarded the Georgina Joshi Graduate Fellowship for the 2015-16 academic year. Smagur has performed numerous times at IU, including lead roles in IU Opera Theater's productions of Mozart's *The Magic Flute* (Tamino) and Gilbert and Sullivan's *H.M.S. Pinafore* (Ralph Rackstraw).

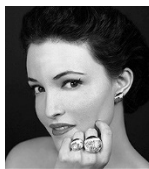


Canadian tenor **Justin Stolz** is currently a graduate student at the Indiana University Jacobs School of Music under the tutelage of Timothy Noble. He is a recent graduate of The Glenn Gould School at The Royal Conservatory of Music, where he studied under Monica Whicher as an Investco Scholarship recipient and a 125 Scholarship recipient. His voice studies began with Mary McGhee in his hometown of Thunder Bay, Ontario. Stolz's recent performance credits include Mr. Owen in Argento's *Postcard from Morocco*, Rodolfo in Puccini's *La Bohème*, Young Gypsy in Rachmaninoff's *Aleko*, Don Ottavio in Mozart's *Don Giovanni*, and Pane in Cavalli's *La Calisto*. Other notable performances include Leon in the Canadian premiere of Milhaud's *La mère coupable* and Count di Belprato in Cagnoni's *Don Bucefalo*. Last fall, Stolz placed first in the Annual S. Livingston Mather Competition in Cleveland, Ohio. His performance tonight as Don José marks his IU Opera Theater debut.

### Carmen



**Courtney Ellen Bray** made her debut in Germany in the title role of Cenerentola in Rossini's *La Cenerentola*. As a singer under contract in Germany, she performed a large and varied repertoire, including opera, operetta, orchestral concerts, and art song recitals. She has appeared as a leading lyric mezzo-soprano in Greece, Poland, Czechoslovakia, Italy, Mexico, and the United States. Roles include Suzuki in *Madame Butterfly*, Giulietta in *The Tales of Hoffmann*, Rosina in *The Barber of Seville*, Maddalena in *Rigoletto*, Mistress Quickly in *Falstaff*, and Iphigénie in *Iphigénie en Tauride*, and scenes as Azucena in *Il Trovatore* and Amneris in *Aida*. In 2006, Bray made her American concert hall debut on the main stage of Carnegie Hall, as a soloist in Mozart's Requiem and Bruckner's Te Deum. She returned to New York to sing at Carnegie again in the United States premiere of Cherubini's *Medée* in the original French version. She has been a featured soloist with the Guanajuato Symphony Orchestra in Mexico. This led to invitations by both the Silesian Philharmonic and the Bohuslav Martinů Philharmonic Orchestra to appear as featured soloist in festival opera concerts. She performed Erda from Wagner's *Das Rheingold* in Teatro Goldoni in Livorno, Italy, and Waltraute's Narrative from *Götterdämmerung* in Oklahoma. As the two-time first-place winner of the Benton-Schmidt Vocal Competition, she earned her master's degree at the University of Oklahoma in May 2013. Bray is currently pursuing a performer diploma at the Jacobs School of Music studying with Carol Vaness.



Spanish soprano **Patricia Illera** is a first-year master's student at Indiana University under the tutelage of Carol Vaness. After pursuing her Bachelor of Medicine degree from the Autonomous University of Madrid, she started her Bachelor in Voice Performance in the Escuela Superior de Canto de Madrid, where she studied with soprano Sara Matarranz and vocal coach Jorge Robaina. Illera then had the opportunity to perform the roles of Paloma in Barberi's *El Barberillo de Lavapiés* and Gertrud in Humperdinck's *Hansel and Gretel*. While a soprano section leader in the Madrid Youth's Choir, she appeared also as a soloist in Vivaldi's *Gloria*, Rossini's *Stabat Mater*, and Mozart's C Minor Mass, among others. She was a winner of the Joven Orquesta y Coro de la Comunidad de Madrid (JORCAM) Competition award and the Academy of International Education scholarship, as well as a finalist in Elda's International Competition and the Magda Olivero International Voice Competition. Illera participated in the European Young Artists Program, performing the roles of Mimi in Puccini's *La Bohème*, Fiordiligi in Mozart's *Così fan tutte*, and several of Zarzuela's roles. She has studied with professional singers such as Santiago Calderón, Nicola Beller, Francesca Roig, Carlos Chausson, Alessandra Althoff, and Ileana Cotrubas, and with vocal coaches such as Giulio Zappa, Borja Mariño, Miquel Ortega, and Alberto Malazzi.

## Micaëla



Soprano **Yuji Bae**, a native of South Korea, is a performer diploma student at the Jacobs School of Music. She earned her bachelor's degree in music from Seoul National University (SNU), where she studied with Philip Kang. After earning her B.M. degree from SNU, she studied at Rimini Academia, where she performed the role of Violetta in Verdi's *La Traviata*. She also studied at the Rossini Conservatorio in Pesaro, Italy. Bae has performed as a rising star in Seoul and in a gala concert in Pesaro, Italy. She is a first-place winner of the Concorso Internazionale Città di Pesaro (summer 2014), first-place winner of the Korea Herald Music Competition, third-place winner of the Music Education News Competition, special-prize winner of the National Teenager Music Competition, and second-place winner of the Bucheon Teenager Music Competition. She sang the role of Pamina in Mozart's *The Magic Flute* last year. Bae is a student of Costanza Cuccaro.



Soprano **Claire Lopatka** is making her solo debut with IU Opera Theater in this production of *Carmen*. She is a senior pursuing her Bachelor of Music in Voice Performance under the tutelage of Heidi Grant Murphy. At IU, she has been privileged to also study with other distinguished faculty members, including Scharm Schrock and Teresa Kubiak. In Lopatka's hometown of State College, Pa., she began her operatic studies with Norman Spivey of Penn State University. She spent a summer in France with the Franco-American Vocal Academy and performed the role of Achilles in Offenbach's *La Belle Hélène*. She spent last summer in Utah performing with the Utah Festival, covering the roles of Musetta in Puccini's *La Bohème* and Julie Jordan in Rodgers and Hammerstein's *Carousel*. Lopatka will return to Utah this summer to perform the role of Lauretta in Puccini's *Gianni Schicchi* and to cover Magnolia in Kern and Hammerstein's *Show Boat*.



## Escamillo



**Ross Coughanour** is a baritone from Santaquin, Utah, currently pursuing a master's degree at Indiana University. He earned a B.A. in Vocal Performance from Brigham Young University (BYU) in 2013. While at BYU, Coughanour performed such roles as Papageno in Mozart's *Die Zauberflöte*, Ben in Menotti's *The Telephone*, Guglielmo in Mozart's *Così fan tutte*, Dr. Stone in Menotti's *Help, Help, the Globolinks!*,

Somarone and Leonato in Berlioz's *Béatrice et Bénédicte*, and the Duke of Plaza-Toro in Gilbert and Sullivan's *The Gondoliers*. He has also played the Marquiz in Verdi's *La Traviata* with the Utah Lyric Opera, Uncle Bonze in Puccini's *Madama Butterfly* with the Utah Lyric Opera, and Edwin in Gilbert and Sullivan's *Trial by Jury* with Snow College Opera. At IU, he was featured as Mang Ong in the world premiere of P. Q. Phan's *The Tale of Lady Thi Kinh*, Marcello in Puccini's *La Bohème*, Melisso in Handel's *Alcina*, and the Pirate King in Gilbert and Sullivan's *Pirates of Penzance*.



Originally from Fuzhou, Fujian province, China, **Jianan Huang** is a second-year master's student in the Jacobs School of Music and a recent graduate of Adelphi University. At IU, he has sung a baritone solo with the University Choir and made his IU Opera Theater debut as Speaker in Mozart's *The Magic Flute*. He recently made his New York City debut as Guglielmo in Mozart's *Così fan tutte*. In 2014, Huang participated in the

International Vocal Arts Institute Summer Program and sang the role of Belcore from Donizetti's *L'Elisir d'amore*. He also participated in the Manhattan School of Music Summer Opera Program, where he sang the role of Mercurio in Monteverdi's *L'Incoronazione di Poppea*. He has participated in the Opera Breve Vocal Intensive Workshop in Wichita Falls, Texas, for the past two summers, singing the roles of the Count in Mozart's *Le Nozze*

Bloomington Symphony Orchestra

# Judgement Day

Shostakovich - Symphony #5  
Dvorak - Violin Concerto

**Buskirk-Chumley Theater**  
114 E. Kirkwood

TICKETS  
bctboxoffice.com  
812-323-3020

**May 14**  
**7:30 pm**

di Figaro and Marco in Puccini's *Gianni Schicchi*. In 2016, he won second prize of the National Society of Arts and Letters National Annual Awards Competition, and in 2013, he won first prize in the National Association of Teachers of Singing New York City regionals competition. Huang currently studies with Andreas Poulimenos.

## Zuniga



**Jeremy Gussin**, bass-baritone, is a second-year doctoral student studying under Andreas Poulimenos. From Iowa City, Iowa, he completed his undergraduate studies in music education at the University of Wisconsin-Eau Claire (UWEC). While at UWEC, Gussin performed as Papageno in Mozart's *The Magic Flute* with UWEC Opera, sang with the *DownBeat* Award-winning Jazz Ensemble I under the direction of Bob Baca, and composed for and student-conducted the Singing Statesmen. A strong proponent of contemporary popular music, Gussin participated as a panelist in a discussion on vocal jazz and contemporary a cappella at the national American Choral Directors Association (ACDA) convention in 2013. He arranged two pieces for the "A Community that Sings" initiative at the 2014 North Central Division ACDA convention in Des Moines, Iowa. While at IU, he has performed as a soloist for the Singing Hoosiers and the Vocal Jazz Ensemble under the direction of Ly Wilder and the late Steve Zegree. Gussin has appeared in IU Opera productions of Verdi's *Falstaff* (Pistola), Mozart's *Le Nozze di Figaro* (Antonio), P. Q. Phan's *The Tale of Lady Thi Kinh* (Ly Truong), Menotti's *The Last Savage* (Maharajah), and Heggie's *Dead Man Walking* (Warden). He sings professionally on studio sessions for clients such as Hal Leonard Corporation, Alfred Music, and Lorenz Corporation through Airborne Studios in Zionsville, Ind.



Bass-baritone **Andrew Richardson** is a doctoral student at the Jacobs School of Music. Hailing from South Bend, Ind., he earned his bachelor's degree in vocal performance from DePauw University and his master's degree from Indiana University. While at IU, Richardson has appeared as George Benton (Heggie's *Dead Man Walking*), Rambaldo (Puccini's *La Rondine*), Sarastro and the Second Armored Man (Mozart's *The Magic Flute*), the Maharajah (Menotti's *The Last Savage*), The Father (Humperdinck's *Hansel and Gretel*), Ariodate (Handel's *Xerxes*), the Notary (Strauss's *Der Rosenkavalier*), Benoit/Alcindoro (Puccini's *La Bohème*), Antonio (Mozart's *Le Nozze di Figaro*), and Wagner (Gounod's *Faust*). He performed the role of Uberto in a special production of Pergolesi's *La serva padrona* at IU. Other performances include Bartolo (*Le Nozze di Figaro*), Simone (Puccini's *Gianni Schicchi*), and Colline (*La Bohème*). Over the summer, Richardson performed Schubert's *Winterreise* at the Green Castle Summer Music Festival as well as in recitals featuring Brahms' *Vier ernste Gesänge* and Schumann's *Liederkreis, Op. 39*. He is a student of Andreas Poulimenos.

## Moralès



**Mark Billy** is a lyric baritone and Native American (Choctaw) from Finley, Okla. His undergraduate studies in voice at the University of Oklahoma (OU) were under the mentorship of baritone Richard Anderson. Billy made his operatic debut as Il Commendatore in OU Opera Theatre's 2012 production of Mozart's *Don Giovanni*. In 2013, he sang the role of Thoas in OU's production of Gluck's *Iphigénie en Tauride*, and in 2014, he sang the lead role of Simon in OU's choreographed production of Haydn's oratorio *Die Jahreszeiten*. He has also received instruction from legendary

mezzo-soprano Marilyn Horne in both master classes and private lessons. This past fall, he appeared in the chorus for IU Opera's production of Heggie's *Dead Man Walking*. In December 2015, he was featured in an opera workshop as Ford in Verdi's *Falstaff* and as the title role in *Rigoletto*. Billy will sing Lescaut in scenes from Massenet's *Manon* for an opera workshop this April. He studies with soprano Carol Vaness.



Romanian baritone **Teofil Munteanu** is currently a freshman pursuing a B.M. in Voice Performance. He is the recipient of an Indiana University Jacobs School of Music Premier Young Artist Award Scholarship and a Music Faculty Award Scholarship. He sang in Lotte Lehmann Akademie's production of Mozart's *Così fan tutte* and has performed throughout Germany in many recitals. He was the youngest artist in the Sankt Goar International Music Festival and Academy's Opera Audition session(s). At the academy, Munteanu worked with many artistic directors, pianists, and singers, including soprano Elena Gorshunova, Helmut Deutsch, and Sebastian Schwarz. He has performed in concert with the Phoenix Opera under the baton of John Massaro. Munteanu was most recently seen as a prison guard in IU Opera Theater's 2015 production of Heggie's *Dead Man Walking*. He has studied privately with Gail Dubinbaum and John Massaro. He is currently studying with Andreas Poulimenos.

## Frasquita



Soprano **Emma Donahue** is a native of Vinalhaven, Maine. At age 8, she premiered the role of the Migratory Bird in William Bolcom's *The Wind in the Willows* and at age 12, appeared as a soloist in the musical *Islands* on Broadway. She earned her Bachelor of Music degree from the University of Massachusetts Amherst, where her operatic credits include Adina (Donizetti's *L'Elisir d'Amore*), Belinda (Purcell's *Dido and Aeneas*), Adele (Strauss's *Die Fledermaus*), Nannetta (Verdi's *Falstaff*), and Violetta (Verdi's *La Traviata*). Internationally, she has performed Ismene in Mozart's *Mitridate* in Melbourne and Musetta in *La Bohème* at Opera on the Avalon in Newfoundland. Donahue debuted last year as Queen of the Night in IU Opera Theater's production of Mozart's *The Magic Flute*. Other IU credits include Lisette (Puccini's *La Rondine*), Suor Genoviefra (Puccini's *Suor Angelica*), and Nella (Puccini's *Gianni Schicchi*) with the Vaness Opera Workshop, as well as appearances in Menotti's *The Last Savage* and P. Q. Phan's *The Tale of Lady Thi Kinh*. As a concert soloist, she has sung in Bach's *Magnificat* and Mozart's Requiem with the University Singers, Beethoven's Mass in C Major with the University Chorale, and Barber's *Knoxville: Summer of 1915* with the IU Summer Philharmonic. She currently holds the position of soprano soloist for the Indianapolis Symphony Orchestra's Discovery Concert Series. An IU Artistic Excellence Award recipient, Donahue is pursuing a Master of Music degree as a student of Carol Vaness.



Soprano **Madeline Ley** is completing her master's degree at the Jacobs School of Music. Originally from Elkton, Md., she earned her B.M. in Voice Performance from Wheaton College Conservatory of Music. While there, Ley was a soloist with the Wheaton College Concert Choir in Mozart's Requiem and Aaron Copland's *In the Beginning*. She was also involved in the opera program at Wheaton, where she sang the role of Hansel in Humperdinck's *Hansel and Gretel* and sang in Mozart opera scenes as Pamina in *Die Zauberflöte*, Susanna in *Le Nozze di Figaro*, and Zerlina from *Don Giovanni*. In summer of 2011, Ley studied opera at the Manhattan School of Music, where she sang in

the scenes program as Mercedes from *Carmen* and Third Lady from *Die Zauberflöte*. Before finishing her undergraduate studies, she studied abroad with Oberlin in Italy, where she sang the scenes of the role of Zenobia from Handel's *Radamisto* and in the chorus of Puccini's *La Bohème*. At IU, she has performed as Kätchen in Massenet's *Werther* and in the chorus for P. Q. Phan's *The Tale of Lady Thi Kinh*, Puccini's *La Bohème*, and Mozart's *The Magic Flute*. She is a student of Timothy Noble.

## Mercédès



**Chelsea DeLorenz** is a mezzo-soprano from Garland, Texas, in her second year of graduate studies under the tutelage of Patricia Stiles. She previously attended The University of Texas at Austin, where she graduated Phi Beta Kappa with degrees in both Spanish and voice performance. This past summer, DeLorenz performed the title role in Massenet's *Cendrillon* with the Miami Summer Music Festival. Other recent credits include the roles of Ruth (*Pirates of Penzance*) with the University Gilbert & Sullivan Society, Hansel (Humperdinck's *Hansel and Gretel*), and Susanna Walcott (Ward's *The Crucible*).



Mezzo-soprano **Marianthi Hatzis** is pursuing her Bachelor of Music degree at the Jacobs School of Music. She is a recipient of the Dean's Scholarship and studies with Patricia Stiles. Hatzis has appeared with IU Opera Theater as Zulma in Rossini's *L'Italiana in Algeri* and Liat in Rodgers and Hammerstein's *South Pacific*. She has performed the role of Second Woman and was the understudy of Dido in *Dido and Aeneas* with Lefkas Music in Lefkada, Greece. Additionally, she has appeared with New Voices Opera in its Fall Exhibition as the title mezzo role in Kimberly Osberg's opera *Thump*. She has also performed in the Jacobs School of Music's Summer Opera Workshop as Poppea in Monteverdi's *L'incoronazione di Poppea* and Giannetta in Donizetti's *L'Elisir d'Amore*. Hatzis has appeared as a soloist in IU's contemporary vocal ensemble NOTUS, University Singers, and Conductors' Chorus, and was a member of Eric Whitacre's Chicago premiere of *Paradise Lost: Shadows and Wings*. She won first place in the Indianapolis Matinee Musicale Competition and first place in the Fourth-Year College Women division of the Indiana National Association of Teachers of Singing Chapter. She has performed for audiences such as the Metropolitan Iakovos of Chicago and the Greek Archdiocese of Chicago. She will be singing in the Young Artist Program of SongFest this May with a full-tuition scholarship. A native of Greece, she lives in Chicago and plans to continue her studies in Europe this coming year.

## Le Dancaire



**Andres Acosta** is a first-year graduate student at the Jacobs School of Music studying with Carlos Montané. Acosta, a Miami, Fla., native, earned his undergraduate degree from Florida State University as a part of David Okerlund's studio. He made his IU Opera debut as Alfred in Strauss's *Die Fledermaus* earlier this season. He has recently portrayed the roles of Ferrando in Mozart's *Così fan tutte*, Sellem in Stravinsky's *The Rake's Progress*, Don Ottavio in Mozart's *Don Giovanni*, and Sam Kaplan in Kurt Weill's *Street Scene*. Acosta was awarded the Judy George Junior Young Artist First Prize Award in the 2015 Young Patronesses of the Opera Voice Competition. He was nominated as 2014 Humanitarian of the Year at Florida State University and is recognized as a Brautlecht Estate Endowed and Music Guild Scholar.



Baritone **Benjamin Seiwert** is a senior pursuing a B.M. in Voice Performance at Indiana University. While at IU, he has performed the roles of The Painter and English Tailor in *The Last Savage* by Menotti and The Motorcycle Cop in *Dead Man Walking* by Heggie. He has also performed the roles of Lord Tolloller from *Iolanthe* and Samuel from *The Pirates of Penzance* with the University Gilbert & Sullivan Society.

Seiwert has sung in several opera choruses, including Massenet's *Cendrillon*, Verdi's *Falstaff*, Mozart's *Le Nozze di Figaro*, Gilbert and Sullivan's *H.M.S. Pinafore*, Rossini's *L'Italiani in Algeri*, Menotti's *The Last Savage*, and Rodgers and Hammerstein's *South Pacific*. He is a student of Patricia Stiles.

## Le Remendado



Tenor **Darian Clonts**, a native of Atlanta, Ga., is in the final year of his Master of Music in Voice Performance degree at the Jacobs School of Music. He made his debut with IU Opera Theater singing the role of Parpignol in the 2014 production of Puccini's *La Bohème*. He earned his Bachelor of Arts degree in 2012 from Morehouse College in Atlanta, Ga., where he studied voice with Uzee Brown Jr. In 2011, Clonts was awarded

second place in the vocal solo competition of the Metropolitan Atlanta Musicians Association's branch of the National Association of Negro Musicians. He joined The Atlanta Opera for the 2012-13 season and performed in its productions of Bizet's *Carmen*, Verdi's *La Traviata*, and Rossini's *L'Italiana in Algeri*. He attended the Princeton Festival in the summer of 2014, where he performed in *Porgy and Bess* as a member of the chorus and a soloist. Clonts previously performed in the IU Opera Theater production of *The Last Savage* as Scientist. He also has previously appeared at IU in Gilbert and Sullivan's *H.M.S. Pinafore*, Rossini's *L'Italiana in Algeri*, Mozart's *The Magic Flute*, and Strauss's *Die Fledermaus* as a member of the chorus. He performed the role of Bob Boles in Britten's *Peter Grimes* in opera workshop under the direction of Carol Vaness and is a student of Brian Horne.



Tenor **Max Zander** is in the second year of his master's degree studies. During his tenure at IU, he has appeared as Dr. Blind in Strauss's *Die Fledermaus*, Basilio in Mozart's *Le Nozze di Figaro*, Bardolfo in Verdi's *Falstaff*, Njegus in Lehár's *The Merry Widow*, Rabbi in Menotti's *The Last Savage*, Modiste/Liveryman in Massenet's *Cendrillon*, and various characters in *Candide* as well as in the choruses of numerous other productions.

Zander has also appeared as Prunier in Puccini's *La Rondine* with Carol Vaness's Graduate Opera Workshop and as Tolloller in the University Gilbert & Sullivan Society's inaugural production of *Iolanthe*. His other operatic credits include Nemorino in Donizetti's *L'Elisir d'Amore* with the Montefeltro Festival in Italy, Flute in Britten's *A Midsummer Night's Dream* and Monostatos in Mozart's *The Magic Flute* with the Halifax Summer Opera Festival in Canada, and Borsa in *Rigoletto* with the North Shore Music Festival. As a festival artist with Utah Festival Opera & Musical Theatre, Zander sang the roles of Parpignol in Puccini's *La Bohème* and Anselmo in *Man of La Mancha*. He covered the roles of Sancho in *Man of La Mancha* and J. Pierrepont Finch in *How to Succeed in Business Without Really Trying*. He will return to the MAC stage for *Oklahoma!*, his sixteenth IU Opera production. He is a native of Great Neck, N.Y., and is currently a student of Patricia Stiles.

## Philharmonic Orchestra

### *Violin I*

Yerim Lee  
Andrew Cheshire  
Skye Kinlaw  
Max Ramage  
Sofia Kim  
Jason Chen  
Bonnie Lee  
Michael Su  
Callum Smart  
Janani Sivakumar  
Jonathan Yi  
Jonathan Chern  
Katherine Floriano

### *Violin II*

Jacqueline Kitzmiller  
Jimin Lim  
Christine Lau  
Gaia Ramsdell  
Joseph Ohkubo  
Clara Scholtes  
Kathryn Chamberlain  
Christopher Leonard  
Jeong Won Kim  
Jieun Park

### *Viola*

Evan Robinson  
Yonsung Lee  
Mara Arredondo  
Ke Zhang  
Mason Spencer  
Christopher Alley  
Kimberly Hankins  
Elizabeth Oka

### *Cello*

Guilherme Monegatto  
Hyeok Kwon

### *Cello (cont.)*

Kelly Knox  
David Dietz  
Justin Goldsmith  
Keeon Guzman  
Lindy Tsai  
Adrian Golay

### *Bass*

Kyle Sanborn  
Jack Henning  
Lindsay Bobyak  
John Bunck

### *Flute/Piccolo*

Carole Pouzar  
Elspeth Hayden

### *Oboe*

Gabriel Young  
Anish Pandit, *English*

### *Horn*

### *Clarinet*

Thomas Wilson  
Zachary Stump

### *Bassoon*

Conor Bell  
David Carter

### *Horn*

Ian Petruzzi  
Nicolas Perez  
Orlando Medrano  
Drew Wright

### *Trumpet*

Jacob Hook  
Michael Edalgo

### *Trombone*

Matthew Williamson  
Ashley Cox  
Christopher Jordan, *Bass*

### *Timpani*

Alana Wiesing

### *Percussion*

Alexander Skov  
Victoria Nelson  
Joel Castro-Lawicki

### *Harp*

Seika Dong

### *Banda*

Sean Burdette, *Trumpet*  
Christopher Pate, *Trumpet*  
Matthew Blauvelt, *Trombone*  
Eric Hung, *Trombone*  
Jackson McLellan, *Trombone*

### *Orchestra Manager*

Lindsay Bobyak

### *Orchestra Set-Up*

Lindsay Bobyak  
Skye Kinlaw  
Christine Lau  
Bonnie Lee

### *Librarian*

Alizabath Nowland



## Student Production Staff

Assistant Conductor . . . . .	.Danko Drusko
Assistant Director . . . . .	Hallie Stebbins
Coach Accompanist . . . . .	Louis Lohraseb
Associate Opera Chorus Master . . . . .	Michaela Calzaretta
Assistant Opera Chorus Master . . . . .	.Han Na Jang
Children's Chorus Rehearsal Accompanist . . . . .	.Kartika Putri
Head Fly Person . . . . .	.Nate Bleeker
Deck Supervisors . . . . .	Hunter Rivera, Sarah Schaefer
Deck Crew . . . . .	Harper Humphrey, Allen Karel, Ellen Mills Faith Mystak, Ulises Ramirez, Kyle Resener Rosa Schaefer, Jonathan Smith
Electrics Supervisors . . . . .	.Alexis Jarson, Betsy Way
Electrics Crew . . . . .	Glen Axthelm, Esprit Canada, Corwin Deckward Lucy Knorr, William Lusk, Lucy Morrell, Angela Owens Evan Pruitt, Lucas Raub, June Tomastic, Sasha Wiesenahn
Props Master . . . . .	Olivia Dagley
Paint Supervisors . . . . .	Amber McCoy, Marcus Simmons
Paint Crew . . . . .	Olivia Dagley, Lynn Glick Nathanael Hein, Melissa Krueger, Kayla Listenberg Gabrielle Ma, Jóhann Schram-Reed, Michael Schuler Audrey Stephens, Macey White, Christy Wisenhahn
Wig, Hair, and Makeup Assistant . . . . .	.Eileen Jennings, Amy Wooster
Costume Crew . . . . .	Mackenzie Allen, Maggie Andriani Tyler Dowdy, Leah Gaston, Kayla Eldridge Colin Ellis, Caroline Jamsa, Kaity Jellison Allie Hutchinson, Lily Overmyer, Imani Sailers Amanda Sesler, Nell Vandeveld Mary Whistler, Amy Wooster
Supertitle Operator . . . . .	.Shin-Yeong Noh
Audio/Video Production Crew . . . . .	William Chen, Nathan Kane Bryce Ferendo, Levi Reece, Misha Ulmet



# Jacobs School of Music Honor Roll

## Calendar Year 2015

### Individual, Corporate, and Foundation Supporters

The Jacobs School of Music wishes to recognize those individuals, corporations, and foundations that have made contributions to the school between January 1, 2015, and December 31, 2015. Those listed here are among the Jacobs School's most dedicated and involved benefactors, and it is their outstanding generosity that enables the IU Jacobs School of Music to continue to be the finest institution of its kind in the nation.

#### ———— \$1,000,000 and Up ————

The Estate of Barbara M. Jacobs  
David H. Jacobs

Louise Addicott-Joshi and Yatish Joshi

#### ———— \$100,000 - \$999,999 ————

Aileen Chitwood\*  
Ted W. Jones

Jamey and Sara Aebersold  
Gary and Kathy Anderson  
Carol V. Brown  
J. Peter Burkholder and P. Douglas  
McKinney  
Luba Edlina-Dubinsky  
James and Elizabeth Ericksen  
Mary Kratz Gasser

Frank C. Graves and Christine Dugan  
Ruth E. Johnson  
Sarah Clevenger  
Monika and Peter Kroener  
Shalin C. Liu  
William F. Milligan\*  
Regina Momgaudas  
Richard and Barbara Schilling

The Estate of Virginia Schmucker  
Curt and Judy Simic  
Kim and Scott Storbek  
Robert D. Sullivan  
Charles and Lisa Surack  
Mimi Zweig

#### ———— \$5,000 - \$9,999 ————

S. Sue Aramian  
Theodore W. Batterman  
Jack and Pam Burks  
R. Park and Louise Carmon  
Susan Cartland-Bode and Henry J. Bode  
Ethel and William Gofen  
Jay and Karen Goodgold

Lenore S. Hatfield  
Richard and Alice Johnson  
Katherine C. Lazerwitz  
Perry J. Maull  
Jon A. Olson  
Al and Lynn Reichle  
Jeannette and Harold Segel

Eric C. Trefelner  
Brett and Diane Varner  
Mary H. Wennerstrom and Leonard M.  
Phillips\*  
Nancy and Allen White  
Theodore S. Widlanski  
Michael J. Williamson and Kathy Weston

#### ———— \$1,000 - \$4,999 ————

Charles and Donald Allen  
Ann C. Anderson  
Kenneth and Georgia Aronoff  
Linda A. Baker  
Nicholas M. Barbaro and Sue Ellen Scheppeke  
Robert Barker and Patsy Fell-Barker  
Brett and Amy Battjer  
Norma B. Beversdorf-Rezits and  
Joseph M. Rezits  
W. Michael Brittenback and William  
Meezan  
Mary and Schuyler Buck  
William and Anita Cast  
Marcella and Scott Caulfield  
Jerald and Megan Chester  
Joyce E. Claffin  
James and Carol Clause  
Mark and Katy Cobb  
Carol and John Cornwell  
William and Marion Crawford  
Jay and Jacqueline Dickinson  
Gary L. and Sandra G. Dowty  
Jane and D. Kim Dunning  
Nile and Lois Dusdieker  
Joseph R. Fickle  
Jane M. Fricke  
Gabriel P. Frommer\*  
Jack and Linda Gill

Alan and Margaret Golston  
Rita B. Grunwald  
Rusty and Ann Harrison  
Dale C. Hedding  
Bernhard C. Heiden\*  
Jerome and Lucinda Hey  
J. Stanley and Alice Hillis  
L. Scott and Donna J. Horrall  
Nancy O. Hublar  
Patricia C. Jones  
Robert and Lisa Jones  
Linda and Kenneth Kaczmarek  
Thomas and Gail\* Kasdorf  
John Kincaid and Mary Soper  
Vicki and Thomas King  
George and Cathy Korinek  
John and Nancy Korzec  
Judith and Dennis Leatherman  
P. A. Mack, Jr.  
Gary and Carol Matula  
Darby Earles McCarty  
Janet and George McDonald  
Susann H. McDonald  
Geraldine and John Miller  
Siri Montecino  
Craig C. Morris and Jeffrey C. Brown  
John and Barbara Morris  
James Neff and Susan Jacobs-Neff

Del and Letty Newkirk  
Gary and Susan Noonan  
Joan C. Olcott  
Ora H. Pescovitz  
Gary and Christine Potter  
George and Wendy Powell  
Nancy P. Rayfield  
Al and Lynn Reichle  
Gwyn and Barbara Richards  
Martha and Jeffrey Sherman  
W. Richard Shindle  
Jefferson and Mary Shreve  
George and Regiana Sistevaris  
Janet S. Smith  
W. Craig Spence  
James and Susan Stamper  
Ellen Strommen  
Linda Strommen  
Mark A. Sudeith  
Bruce and Madelyn Tribble  
Robert M. VanBesien  
Mark and Gail Welch  
Alan and Elizabeth Whaley  
Beth Stoner Wiegand and Bruce R.  
Wiegand  
Doris Wittenburg and Harlan Lewis  
Laura Youens-Wexler and Richard Wexler

---

**\$500 - \$999**

---

Susan L. Adams  
Margaret and Charles Athey  
Karen and John Bailey  
C. Matthew Balensuela  
Joan Brand and Andre Watts  
Roberta Brokaw  
Mary and Montgomery Brown  
Jean A. Burkholder  
Jonathan D. Chu  
Miriam S. Clarke  
J. Neal Cox  
Ray and Molly Cramer  
Ed and Jane Daum  
Melissa and Eric Dickson  
David B. Edgeworth  
Stephen A. Ehrlich  
Donald and Sandra Freund  
Charles L. Fugo  
Jann and Jon Fujimoto  
Suzanne and Frank Gault  
Gene F. Hedrick  
Constance and James Glen  
Alan R. Goldhammer  
John and Susan Graham  
Jean-Louis Haguenaer  
Carolyn and Richard Haile

Yasunori Hattori  
Gene and Judy Hedrick  
Carter and Kathleen Henrich  
Allan Hershfield and Alexandra Young  
Jolaine L. Hill  
Larry and Susan Hodapp  
Rona Hokanson  
Jim Holland  
William and Karol Hope  
Robert J. Hublar  
Jeffrey S. Jepsen  
Michael W. Judd  
Midori Kataoka  
Marilyn Bone Kloss  
Virginia A. Kraus  
James W. and Evelyn LaFollette  
Jon and Susan Lewis  
David and Julie Lohrmann  
Barbara and John Lombardo  
Emilia P. Martins and Michael Lynch  
Carmen Hinkle McGrae  
Clarence and Nancy Miller  
Edward J. Mitro  
James and Jacqueline Morris  
Timothy Morrison and Linda Hunt  
Dana R. Navarro

Sujal and Elizabeth Patel  
P. Q. Phan  
Edward and Lois Rath  
Scott and Katherine Riley  
Clyde R. Rose  
Randy Schekman and Nancy Walls  
Scharmal K. Schrock  
Richard C. Searles  
Odette F. Shepherd  
Anthony and Jan Shipp  
James B. Sinclair  
Lee Ann Smith and Mark C. Webb  
Michael R. St John  
Janis M. Stockhouse  
Kitty Tavel  
Karen M. Taylor, D.M.  
Susan C. Thrasher  
James and Cheryl Topolgun  
Richard E. Walker  
Rebecca and Wayne Weaver  
Carolyn A. White  
E. G. and Sharon White  
David L. Wicker  
Susan and David Young

---

**\$250 - \$499**

---

Neal and Elizabeth Abdullah  
James F. Ault  
Sandra C. Balmer  
Samuel and Janet Baltzer  
Brian M. Barnicle  
Charles and Gladys Bartholomew  
Susan D. Bartlett  
Robert W. Bastian  
Mark K. Bear  
Frederick and Beth Behning  
Michelle Bergonzi  
Susan and Myron Bloom  
Karen and Arthur Bortolini  
Elizabeth M. Brannon  
Philip and Elizabeth Capasso  
Eric Christ  
Nelda Christ\*  
Cynthia and Alfred Cirome  
Richard K. Cook  
R. Kent Cook  
Katherine R. Covington  
Gretchen E. Craig  
William A. Crowle  
Cheryl and Bradley Cunningham  
Michael G. Cunningham  
Lawrence L. Davis  
Mary A. Diaz-Przybyl  
Clarence and Judith Doninger  
Thomas and Katherine Eggleston  
Peter E. Ellefson  
Mark and Jennifer Famous  
Hollis and Robert Gaston  
Liliana and Dan Gehring  
Inge and Michael Gerber  
Ross A. Gombiner  
Mary A. Gray  
Kenneth C. Green  
Bertram and Susan Greenspan

Debra and John Hatmaker  
William D. Haworth  
Ruth and Lowell Hoffman  
Chris Holmes and David Burkhart  
Annette and Owen Hungerford  
Michele J. Johns and Robert Johns  
Kathleen L. Johnson  
Kristin and Wayne Jones  
Russell L. Jones  
Carol R. Kelly  
Melissa Kevorkian and Jack Fields  
Jillian L. Kinzie and Joseph Throckmorton  
Karen and Taka Kling  
Howard and Linda Klug  
Martin and Janie Kocman  
George J. Kozacik  
Laura Kress and Jay Sissom  
Kathleen C. Laws  
Gregory and Veronica Leffler  
Luther T. Lemley  
Amy L. Letson  
Marie T. Lutz  
Bryan L. Mack  
Brian D. Marcus  
Carolyn Marlow and William Teltser  
Lissa and Philip May  
Thomas and Norma McComb  
Phyllis and Jerry McCullough  
Ellen L. McGlothin  
Ralph and Shirley Melton  
Kathleen and Emanuel Mickel  
Ben F. Miller  
Matthew and Maryann Mindrum  
Patrick and Frances Mitchell  
G. Scott Mitchell and Rosalind Burwell  
Jan T. Mixer  
Lorna L. Moir  
Anne C. Newmar

Ambrrose Ng  
Julia and Omar Nielsen  
Donna and Timothy Noble  
Robert and Ruth Palmer Robert and  
Pamela Phillips  
Donna and Robin Poynor  
Robert L. Ralston  
Phyllis and Jack Relyea  
Joann Richardson  
Mary A. Rickert  
Paul and Barbara Ristau  
David and Orli Robertson  
Jerry and Cynthia Robinson  
Roger Roe  
Bruce Ronkin and Janet Zipes  
Linda J. Rosenthal  
Eugene and Norma Rousseau  
John and Donna Sasse  
Jon and Bambi Saxe  
Cecile and Kenneth Schubert  
Catharine Schutzius and John Dugan  
Christopher and Janet Schwabe  
Edward S. Selby  
David and Barbara Sheldon  
Sue A. Shepard and Donald Helgeson  
Laurelyn and Michael Simons  
Robert L. Smith and Janice L. Lesniak  
Dennis L. Stewart  
Fanfen Tai and Charles Lin  
Dana W. Taylor  
Mary and Donald Trainor  
Violette Verdy  
John and Tamyra Verheul  
Teresa and Peter Wolf  
Giovanni Zanovello  
Conrad and Debora Zimmermann

---

**\$100 - \$249**

---

Lois C. Adams Miller  
Ann H. Adinamis Impicciche  
James A. Allison  
George Alter and Elyce Rotella  
Joseph and Sharon Amlung

Paula J. Amrod  
Stella N. Anderson  
Carol and R. K. Antill  
Kimi W. Atchason  
Judith Auer and George Lawrence

Mary K. Aylsworth  
James and Mary Babb  
Carolyn A. Balfe  
Wesley A. Ballenger  
Daniel C. Balog

Pamela Pfeifer Banks  
David Bannard and Mary Ashley  
John and Patricia Barnes  
Allison and Mark Barno  
Patricia W. Barrett  
Robert R. Bartolot  
Paula and John Bates  
Sue A. Beaty  
James and Lynda Beckel  
Judy and Martin Becker  
Suzanne K. Belbutoski  
David N. Bergin  
Olesia O. Bihun  
Renee and Wilhelm Bilgram  
Cheryl A. Bintz  
David and Judy Blackwell  
Adam R. Blais  
Ronald and Regina Blais  
Gayle and Heinz Blankenburg  
Julian M. Blumenthal  
John and Mary Blutenthal  
Michael and Pamela Bobb  
Francis and Kay Borkowski  
Ruth and Christopher Borman  
Joan H. Bowden  
Cynthia and Bennet Brabson  
Jeffrey L. Bransford  
Peter W. Brengel  
Laurie Brown and Daniel Carroll  
Edward P. Bruenjes  
Margaret and Philip Brummit  
William R. Buck  
Sarah Bullen and Dyan Peterson  
Aaron M. Burkhardt  
Betsy L. Burleigh  
Margaret G. Burns  
John N. Burrows  
Doris J. Burton  
V. Barbara Bush  
Rebecca C. Butler  
W. Leland and Helen Buter  
Margaret R. Buttermore  
James and Carol Campbell  
Phyllip B. Campbell  
James and Ellen Carmichael  
Mary and Stephen Carter  
Linda L. Case  
Susan and Robert Cave  
Harriet R. Chase  
Matthew Christ and Sophia Goodman  
Dianne and Lawrence Christensen  
David Clark and Diane Coure  
Steve and Sonya Clark  
William B. Clay  
Lynda Clendenning and Robert Fuller  
Richard and Lynn Cohee  
Bradley and Michele Cohron  
Robert and Marcia Coleman  
James D. Collier  
Mark R. Conrad  
Sheryl and Montgomery Cordell  
Kevin and Laura Cottrill  
Lynda M. Couch  
Nora B. Courier  
Diane Courtre  
Gary and Ellen Coval  
Cynthia M. Crago  
Ernest and Roxanna Crawford  
Lowell and Sondra Crow  
J. Daniel and Mary Cunningham  
Donna and David Dalton  
John T. Dalton  
Eugene B. Daniels  
Janice E. Daniels  
Gerald and Mary Danielson  
John D. Danielson  
John and Carol Dare

Lenore S. Davis  
Conrad J. Dejong  
Imelda Delgado  
Barbara and Richard Dell  
Mary L. Denne  
Patrick and Karen Dessent  
Susan and Dominic\* Devito  
Deborah J. Deyo-Howe  
Roger D. Dickerson  
Nadine and Holm Diercks  
Barbara and Richard Domek  
Ruth Dostie  
Sharon and John Downey  
Beth and John Drewes  
Margaret J. Duffin  
Gregory S. Dugan  
Kevin J. Duggins  
Alan and Juliet Duncanson  
Moir and Timothy Dyczko  
Mary A. Dye  
Dale and Edith Dzubay  
Silsby S. Eastman  
Robert and Robin Eatman  
Patricia Eckstein  
Frank and Vickie Edmondson  
Anne and John Egan  
Joseph E. Elliott  
Anna and Charles\* Ellis  
Michael J. Ellis  
Mary and Herman Emmert  
Stanley and Pamela Engle  
Lucille I. Erb  
Deborah and Jeffrey Ewald  
Mark Feldstein  
David N. Fienen  
Mary E. Fine  
Donald and Myra Fisher  
Laurie and Patrick Flynn  
William and Eleanor Folley  
Constance C. Ford  
Linda A. Frauenhoff  
Michael and Teresa Frye  
Sean F. Gabriel  
Melva F. Gage  
Thomas E. Gerber  
Susann Gilbert  
Elizabeth and Robert Glassey  
Lorraine Glass-Harris  
James S. Godowns  
Walter A. Goldreich  
Sylvia S. Gormley  
Arlene Goter  
Patricia Goyette-Gill and Richard Gill  
Susan E. Grathwohl  
Robert and Sheri Gray  
Linda J. Greaif  
Gretchen M. Green  
Pamela C. Griffel  
Roberta M. Gumbel  
Nola and John Gustafson  
Christine Haack and Mark Hood  
Chun-Fang B. Hahn  
Patricia L. Hales  
Larry and Barbara Hall  
Steve and Jo Ellen Ham  
Robert and Janet Hamilton  
Donald M. Hankins  
Charlene A. Harb  
John and Teresa Harbaugh  
Christopher and Roxanne Hare  
Jeffrey M. Harris  
Martha and Stephen Harris  
Robert and Deborah Hartigan  
Steven and Karen Hartjes  
F. Michael and Skaidrite Hatfield  
Clayton and Ellen Heath  
Lynn Holding and Blake Wilson

Helen and Kimball Henderson  
Rebecca Henry and Monte Schwarzwaldler  
Florence E. Hiatt  
Leslie W. Hicken  
Patricia L. Hicks  
Linda Higginbotham and Bradley  
Leftwich  
Ford D. Hill  
Suzanne L. Hillis  
William Hillyard and Carrie Bruner  
Laura J. Hilmert  
Joe and Marianne Hinds  
Harvey B. Holly  
Nicholas and Katherine Holzmer  
Julian L. Hook  
Harlow and Harriet Hopkins  
Joseph H. Hopkins  
Judith and Dennis Hopkinson  
Sallie and Robert\* Horner  
Emily L. Hostetter  
Jacqueline and Robert Houchell  
Donald W. Howe  
Patricia and Thomas Howenstine  
Robert B. Huber  
Cindy and John Hughes  
Ivan and Anne Hughes  
Marcia A. Hughes  
Masanori and Seiko Igarashi  
Stefanie Jacob and Scott Tisdell  
Jennifer A. Jafari  
Carole L. James  
Charles and Laurie Jarrett  
Warren W. Jaworski  
Kathryn and Robert Jessup  
Martin D. Joachim  
Edith E. Johnson  
Hollis R. Johnson  
Thomas and Marilyn Johnson  
Marilyn J. Keiser  
Janet Kelsay  
Linda and James Kern  
Rachel and Donald Kessler  
Myrna M. Killie  
John and Julianne King  
Meredith K. Kirkpatrick  
Karen L. Klages  
Lee A. Kohlmeier  
Laszlo and Joanne Kovacs  
Joseph C. Kraus  
Glen Kwok and Chih-Yi Chen  
Judy and Larry Lafferty  
Aaron D. Lan  
Thomas and Nancy Lancaster  
Beverly Landis and Alan Billingsley  
Nicholas R. Lang  
Lois B. Lantz  
Arthur W. Larson  
Randy L. Leazenby  
Debra and Robert Lee  
Kristin M. Lensch  
Anna Leppert-Largent and Gregory  
Largent  
Mary and Timothy Lerzak  
Stine Levy and Arthur Koch  
Jerry and Jane Lewis  
Joseph J. Lewis  
Ann and Scott Liberman  
Nancy Liley  
Lynn and Matthew Litwiller  
Guy and Connie Loftman  
Warren E. Loomis  
Charles Lopinto  
Alma E. Lyle  
Joan I. Lynch  
Frances M. Madachy  
Robert W. Magnuson  
David and Barbara Malson

Mayer and Ellen Mandelbaum  
Leslie and Joseph Manfredo  
Lynne and Richard Marks  
Lisa K. Marum  
John M. Maryn  
Joel and Sandra Mathias  
Matthew and Kelly Mayer  
Philip and Elizabeth McClintock  
Gregory and Margaret McClure  
Marie M. McCord  
David McDonald  
Winnifred and Francis McGinnis  
Jerry A. and Jane P. McIntosh  
James L. McLay  
James D. McLuckie  
Mary Jo McMillan  
Marcia and Michael McNelley  
Sean M. McNelley  
Ted and Bess Megremis  
Katherine and Gerald Mehner  
Edith and Glenn Mellow  
Lynn and David Meyer  
Judith E. Miller  
Mary A. Miller  
Ronald and Joyce Miller  
Thomas J. Miller  
Linda M. Mintener and Robert M. Jones  
Joseph T. Mitchell  
Richard J. Mlynarski  
Jay E. Montgomery  
Terresa Moore  
Patricia and Philip Moreau  
T. Earline Moulder and R. David Plank  
Patricia and John Mulholland  
Dwight R. Mumper  
Ronald L. Munson  
Ann Murray and Michael Hurtubise  
Ray and Wendy Muston  
Dean and Carol Myshrrall  
George and Diane Nadaf  
Yury M. Nedelin  
Helen Rapp Nefkens and Bernard  
Nefkens  
Bud E. Nelson  
Lynn S. Nestler  
Kent and Gail\* Newbury  
Kathleen C. Nicely  
Kenneth H. Nichols  
Carroll E. Nichols  
Gloria G. Noone  
Margaret V. Norman  
Lisa and Frank Nothaft  
David and Diane O'Hagan  
Melinda P. O'Neal  
George and Nancy Osborne  
Mary A. Owings  
Janet and William Palfey  
Mara Parker and Andrew Cogbill  
Sandra B. Parker  
Peggy W. Paschall  
Marilyn J. Patton  
George and Elsie Peffley  
Ronald A. Pennington  
Kathie I. Perrett  
Wayne H. Peterson  
Norman and Sue Pfau  
Gaye S. Platt  
Jeffrey L. Plonski  
Belinda Potoma and Michael Fish  
Frona and Ronald Powell  
Gregory Powell and Miriam McClood Powell  
Sylvanna T. Precht  
John R. Preer  
Ronald and Joan Preloger  
Richard and Mary Pretat  
Patricia and Thomas Price  
Edward Rath

John A. Rathgeb  
Diana and Alan Rawizza  
Mary and William Record  
Helen P. Reich  
David and Leanna Renfro  
Jean and Donald Rhoads  
Carolyn J. Rice  
Timothy J. Riffle and Sarah M. McConnell  
Donald E. Ritter  
Alice E. Robbins  
Samuel and Valerie Roberts  
Murray and Sue Robinson  
Donna and Edward Ronco  
Anthony Ross and Beth Rapiere  
Anya and Ronald Royce  
Gerald J. Rudman  
Irving L. Sablosky  
Janice Salvucci  
Roy and Mary Samuels  
Michael W. Sanders  
Randa K. Sanders  
V. Gayle Sarber  
Mark and Anne Sauter  
Richard K. Schall  
Susan and Stephen Schlegel  
Arthur and Carole Schreiber  
Deborah S. Schwartz  
Perry and Lisa Scott  
Beverly Scott and Sylvia Patterson-Scott  
Laurie and William Sears  
Richard and Ilene Sears  
Robert and Ellen Sedlack  
John A. Seest  
Gillian and Uri Sella  
Maria and Peter Selzer  
Nancy and Stephen Shane  
Nadine E. Shank  
Merry and John Shapiro  
Richard and Margaret Shelly  
Richard and Karen Shepherd  
Larry and Debra Sherer  
Nathan and Joline Short  
Thomas and Donna Shriner  
W. Robert and Jill Siddall  
Samuel and Theresa Sievers  
Catherine A. Smith  
Elwood L. Smith  
Estus Smith  
John and Juel Smith  
Linda K. Smith  
Monte and Rita Smith  
Lucille Snell  
John and Laura Snyder  
Marilyn K. Solomon  
James and Carolyn Sowinski  
Paul V. Spade  
Tom and Linda Sperling  
Darell and Susan Stachelski  
Gary and Anne Steigerwald  
Robert Stockton and Moya Andrews  
Christel and Robert Stoll  
Tom and Melinda Straley  
James L. Strause  
Eric and Etsuko Strohecker  
Jessica Suchy-Pilalis and Labros Pilalis  
Rhonda and Gregory Swanson  
Elizabeth Szymanski  
Leaetta and Rick Taffinger  
Arthur S. Takeuchi  
Sandra and Lawrence Tavel  
Kathleen A. Taylor  
Artemisia and Theodore Thevaos  
Shelley Thomason  
William C. Thompson  
Elaine and Philip Thrasher  
Diana and Joseph Tompa  
Aaron and Mary Lee Tosky

Jonathan Towne and Rebecca Noreen  
Alice and Philip Trimble  
Cheryl Tschanz and William Newkirk  
Linda J. Tucker  
Melody and Dale Turner  
Mary E. Ulrey  
Matthew S. Underwood  
Dianne Vars  
Matthew and Therese Veldman  
Venu Vemuri  
Lisa Ventura  
Sue and Daniel Visscher  
Matthew Vitale  
Sharon P. Wagner  
Barbara J. Waite  
Cheryl and Raymond Waldman  
Jeffrey and Debra Walker  
Cynthia and Jay Wallin  
Elizabeth and Timothy Wappes  
Sarah F. Ward  
Sally and Mark Watson  
Thomas J. Weakley  
Daniel Weiss  
Phyllis C. Werrime  
Roger and Barbara Wesby  
John and Mary Whalin  
Allen and Cheryl White  
James T. White  
Lloyd and Barbara White  
Diane and James Whitlock  
Tony J. Wiederhold  
Thelma J. Wilcox  
Patricia L. Williams  
Lawrence A. Wilson  
Dolores Wilson  
Carl Wiuff  
Donna and Richard Wolf  
Joyce M. Woltman  
Blue B. Woman  
Susan M. Wood  
Eric A. Woodhams  
Earl S. Woodworth  
Karen and Danny Wright  
G. Eugene Yates  
Jamie and Rick Yemm  
Mark A. Yother  
Mijai Youn Auh  
Christopher Young and Brenda Brenner  
Judith and Steven Young  
Jeffery P. Zaring  
Joyce R. Zastrow  
Joan Zegree and Spider Kedelsky  
Joyce and Larry Zimmerman  
David W. Zinsmeister  
Timothy and Sara Zwickl

\* Deceased

## Corporations and Foundations

### \$100,000 and Up

Dorothy Richard Starling Foundation

### \$25,000 - \$99,999

Barbro Osher Pro Suecia Foundation  
Harry Kraus Survivor Trust

The Seven Kids Foundation, Inc.

Summer Star Foundation for Nature, Art  
and Humanity, Inc.

### \$10,000 - \$24,999

David Jacobs Fine Art  
The DBJ Foundation  
EH2, LLC  
Fremonty, LLC  
Indiana Charitable Trust

Medtronic, Inc. Foundation  
Miraflores Investments, LLC  
Old National Wealth Management  
Oregon Gardens, LLC  
Presser Foundation

Smithville Communications, Inc.  
Stirllife Construction of California, Inc.  
Sweetwater Sound, Inc.

### \$1,000 - \$9,999

Avedis Zildjian Company  
Bloomington Classical Guitar Society Inc.  
Bloomington Community Band, Inc.  
C. E. And S. Foundation Inc.  
Camerata, Inc.  
Eli Lilly & Company  
Fidelity Charitable Gift Fund

Greater Kansas City Community Foundation  
The Harvey Phillips Foundation Inc.  
Indiana University Alumni Association  
Kalamazoo Community Foundation  
National Christian Foundation Greater  
Chicago  
National Society of Arts & Letters

Opera Illinois League  
Paulsen Family Foundation  
Robert Carwithen Music Foundation  
Schwab Charitable Fund  
Vanguard Charitable Endowment Program  
The Walt Disney Foundation

## Annual Giving Circles

The Indiana University Jacobs School of Music Annual Giving Circles include individuals dedicated to making a difference in the cultural life of the university. These unrestricted gifts of opportunity capital support the areas of greatest need, including financial aid, faculty research, academic opportunities, and visiting artists.

### *Dean's Circle*

#### Visionary Members

### \$10,000 and Up

Gary and Kathy Anderson  
David H. Jacobs

Monika and Peter Kroener  
Charles and Lisa Surack

#### Strategic Members

### \$5,000 - \$9,999

S. Sue Aramian  
Theodore W. Batterman

Jack and Pam Burks  
Jay and Karen Goodgold

Richard and Alice Johnson  
Jeannette and Harold Segel

#### Supporting Members

### \$2,500 - \$4,999

Nicholas M. Barbaro and Sue Ellen Schepcke  
William and Marion Crawford  
Jack and Linda Gill

Rusty and Ann Harrison  
Darby Earles McCarty  
Del and Letty Newkirk

Al and Lynn Reichle  
Mark A. Sudeith  
Michael J. Williamson and Kathy Weston

#### Contributing Members

### \$1,000 - \$2,499

Ann C. Anderson  
Linda A. Baker  
Robert Barker and Patsy Fell-Barker  
W. Michael Brittenback and William  
Meezan  
William and Anita Cast  
Jerald and Megan Chester

James and Carol Clauser  
Mark and Katy Cobb  
Carol and John Cornwell  
Jane and D. Kim Dunnick  
Gabriel P. Frommer  
Dale C. Hedding  
J. Stanley and Alice Hillis

Patricia C. Jones  
Robert and Lisa Jones  
Linda and Kenneth Kaczmarek  
Thomas and Gail\* Kasdorf  
Vicki and Thomas King  
George and Cathy Korinek  
John and Nancy Korzec

P. A. Mack, Jr.  
Geraldine and John Miller  
John and Barbara Morris  
Joan C. Olcott

Ora H. Pescovitz  
Gary and Christine Potter  
Jefferson and Mary Shreve  
W. Craig Spence

Bruce and Madelyn Tribble  
Robert M. VanBesien  
Beth Stoner Wiegand and Bruce R. Wiegand

## Artist's Circle

— \$500 - \$999 —

Susan L. Adams  
Margaret and Charles Athey  
Mary and Montgomery Brown  
Miriam S. Clarke  
Melissa and Eric Dickson  
Nile and Lois Dusdieker  
Charles L. Fugo  
John and Susan Graham  
Carolyn and Richard Haile  
Carter and Kathleen Heinrich  
Jolaine L. Hill  
William and Karol Hope  
Jeffrey S. Jepsen

Marilyn Bone Kloss  
Virginia A. Krauss  
James W. and Evelyn LaFollette  
Jon and Susan Lewis  
Barbara and John Lombardo  
Emilia P. Martins and Michael Lynch  
Carmen Hinkle McGrae  
Edward J. Mitro  
Jim and Jackie Morris  
Dana R. Navarro  
Sujal and Elizabeth Patel  
Scott and Katherine Riley  
Clyde R. Rose

Randy Schekman and Nancy Walls  
Scharmal K. Schrock  
Richard Searles  
Anthony and Jan Shippes  
James B. Sinclair  
Lee Ann Smith and Mark C. Webb  
Janis M. Stockhouse  
Ellen Strommen  
Richard E. Walker  
Rebecca and Wayne Weaver  
E. G. and Sharon White  
David L. Wicker

— \$250 - \$499 —

Samuel and Janet Baltzer  
Charles and Gladys Bartholomew  
Robert W. Bastian  
Mark K. Bear  
Karen and Arthur Bortolini  
Elizabeth M. Brannon  
R. Kent Cook  
Katherine R. Covington  
William A. Crowle  
Cheryl and Bradley Cunningham  
Michael G. Cunningham  
Mary A. Diaz-Przybyl  
Clarence H. and Judith Doninger  
Mark and Jennifer Famous  
Liliana and Dan Gehring  
Ross A. Gombiner  
Bertram and Susan Greenspan  
Sheila Hass  
William D. Haworth

Ruth and Lowell Hoffman  
Annette and Owen Hungerford  
Russell L. Jones  
Carol R. Kelly  
Jillian L. Kinzie and Joseph Throckmorton  
Howard and Linda Klug  
Kathleen C. Laws  
Gregory and Veronica Leffler  
Amy L. Letson  
Marie T. Lutz  
Brian D. Marcus  
Carolyn M. Marlow and William A. Teltsler  
Lissa and Philip May  
Jerry W. and Phyllis McCullough  
Kathleen and Emanuel Mickel  
Matthew and Maryann Mindrum  
Patrick and Frances Mitchell  
Ambrose Ng  
Robert and Ruth Palmer

Donna and Robin Poynor  
Edward and Lois Rath  
Phyllis and Jack Relyea  
Mary Ann Rickert  
Paul and Barbara Ristau  
Jerry and Cynthia Robinson  
Roger Roe  
Bruce E. Ronkin and Janet L. Zipes  
Linda J. Rosenthal  
Catharine Schutzius and John Dugan  
Christopher and Janet Schwabe  
Edward S. Selby  
David and Barbara Sheldon  
Sue A. Shepard and Donald Helgeson  
Robert L. Smith and Janice L. Lesniak  
Dana W. Taylor  
John and Tamyra Verheul  
Teresa and Peter Wolf

— \$100 - \$249 —

Lois C. Adams Miller  
Joseph and Sharon Amlung  
Paula J. Amrod  
Stella N. Anderson  
Kimi W. Atchason  
Judith Auer and George Lawrence  
Mary K. Aylsworth  
James and Mary Babb  
Carolyn A. Balfe  
Pamela L. Banks  
David Bannard and Mary Ashley  
John and Patricia Barnes  
Patricia W. Barrett  
Robert R. Bartalot  
Susan D. Bartlett  
Sue A. Beaty  
James and Lynda Beckel  
Judy and Martin Becker  
Suzanne K. Belbutoski  
David N. Bergin  
Olesia O. Bihun  
Renee and Wilhelm Bilgram  
Cheryl A. Bintz  
David and Judy Blackwell  
Ronald and Regina Blais  
Gayle and Heinz Blankenburg  
Michael and Pamela Bobb  
Ruth and Christopher Borman

Joan H. Bowden  
Peter W. Brengel  
Robert Brokaw  
Laurie Brown and Daniel Carroll  
Margaret and Philip Brummit  
William R. Buck  
Aaron M. Burkhardt  
Margaret G. Burns  
John N. Burrows  
Doris J. Burton  
Rebecca C. Butler  
Margaret R. Buttermore  
James and Ellen Carmichael  
Mary and Stephen Carter  
Susan and Robert Cave  
Harriet R. Chase  
Dianne and Lawrence Christensen  
Cynthia and Alfred Cirome  
David Clark and Diane Coutre  
Richard and Lynn Cohee  
Bradley and Michele Cohron  
Robert and Marcia Coleman  
Mark R. Conrad  
Richard K. Cook  
Sheryl and Montgomery Cordell  
Diane Courtre  
Cynthia M. Crago  
Ernest and Roxanna Crawford

Donna and David Dalton  
John T. Dalton  
Eugene B. Daniels  
Janice E. Daniels  
Gerald and Mary Danielson  
John D. Danielson  
John and Carol Dare  
Lenore S. Davis  
Conrad J. Dejong  
Imelda Delgado  
Barbara and Richard Dell  
Mary Lynn Denne  
Patrick and Karen Dessent  
Susan and Dominic\* Devito  
Deborah J. Deyo-Howe  
Roger D. Dickerson  
Barbara and Richard Domek  
Sharon and John Downey  
Margaret J. Duffin  
Kevin J. Duggins  
Alan and Juliet Duncanson  
Dale and Edith Dzubay  
Silsby S. Eastman  
Robert and Robin Eatman  
Frank and Vickie Edmondson  
Anne-Marie and John Egan  
Joseph E. Elliott  
Michael J. Ellis

Mary and Herman Emmert  
Stanley and Pamela Engle  
Lucille I. Erb  
Mary E. Fine  
Constance C. Ford  
Sean F. Gabriel  
Melva F. Gage  
Thomas E. Gerber  
James S. Godowns  
Walter A. Goldreich  
Sylvia S. Gornley  
Arlene Goter  
Patricia Goyette-Gill and Richard Gill  
Robert and Sheri Gray  
Linda J. Graf  
Pamela C. Griffel  
Robert M. Gumbel  
Nola and John Gustafson  
Chun-Fang B. Hahn  
Patricia L. Hales  
Charlene A. Harb  
Jeffrey M. Harris  
Martha and Stephen Harris  
Robert and Deborah Hartigan  
Debra and John Hatmaker  
Clayton and Ellen Heath  
Lynn Holding and Blake Wilson  
Helen and Kimball Henderson  
Rebecca Henry and Monte Schwarzwalder  
Florence E. Hiatt  
Suzanne L. Hillis  
William Hillyard and Carrie Bruner  
Joe and Marianne Hinds  
Nicholas and Katherine Holzmer  
Harlow and Harriet Hopkins  
Joseph H. Hopkins  
Judith and Dennis Hopkinson  
Sallie and Robert\* Horner  
Emily L. Hostetter  
Jacqueline and Robert Houchell  
Donald W. Howe  
Ivan and Anne Hughes  
Masanori and Seiko Igarashi  
Stefanie Jacob and Scott Tisdell  
Jennifer A. Jafari  
Carole L. James  
Warren W. Jaworski  
Kathryn and Robert Jessup  
Martin D. Joachim  
John and Julianne King  
Edith E. Johnson  
Kathleen L. Johnson  
Janet Kelsay  
Rachel and Donald Kessler  
Melissa Kevoorkian and Jack Fields  
Myrna M. Killey  
John and Julianne King  
Lee A. Kohlmeier  
Joseph C. Kraus  
Thomas and Nancy Lancaster  
Nicholas R. Lang  
Lois B. Lantz  
Arthur W. Larson  
Debra and Robert Lee  
Mary and Timothy Lerzak  
Stine Levy and Arthur Koch  
Joseph J. Lewis

Nancy Liley  
Warren E. Loomis  
Charles Lopinto  
Joan I. Lynch  
Frances M. Madachy  
Mayer and Ellen Mandelbaum  
Lynne and Richard Marks  
Lisa K. Marum  
John M. Maryn  
Joel and Sandra Mathias  
Philip and Elizabeth McClintock  
Winnifred and Francis McGinnis  
Ellen L. McGlothin  
James D. McLuckie  
Mary Jo McMillan  
Sean M. McNelly  
Edith and Glenn Mellow  
Ralph and Shirley Melton  
Lynn and David Meyer  
Judith E. Miller  
Mary A. Miller  
Ronald and Joyce Miller  
Joseph T. Mitchell  
Terresa Moore  
Patricia and Philip Moreau  
Dwight R. Mumper  
Ann Murray and Michael Hurrubise  
George and Diane Nadaf  
Yury M. Nedelin  
Helen and Bernard Nefkens  
Bud E. Nelson  
Lynn S. Nestler  
Kathleen C. Nicely  
Kenneth H. Nichols  
Julia and Omar Nielsen  
Gloria G. Noone  
Margaret V. Norman  
Lisa and Frank Nothaft  
David and Diane O'Hagan  
George and Nancy Osborne  
Mary A. Owings  
Mara Parker and Andrew Cogbill  
Peggy W. Paschall  
Kathie I. Perrett  
Wayne H. Peterson  
Jeffrey L. Plonski  
Frona and Ronald Powell  
Gregory Powell and Miriam McLeod Powell  
Sylvanna T. Prechtel  
Patricia and Thomas Price  
Diana and Alan Rawizza  
Mary and William Record  
Helen P. Reich  
David and Leanna Renfro  
Jean and Donald Rhoads  
Carolyn J. Rice  
Donald E. Ritter  
Donna and Edward Ronco  
Anthony Ross and Beth Rapier  
Janice Salvucci  
Michael W. Sanders  
Randa K. Sanders  
Virginia G. Sarber  
Mark and Anne Sauter  
Richard K. Schall  
Susan and Stephen Schlegel  
Arthur and Carole Schreiber

Perry and Lisa Scott  
Beverly Scott and Sylvia Patterson-Scott  
Laurie and William Sears  
Richard and Ilene Sears  
Robert and Ellen Sedlack  
Nancy and Stephen Shane  
Nadine E. Shank  
Merry and John Shapiro  
Richard and Karen Shepherd  
Nathan and Joline Short  
Thomas and Donna Shriner  
W. Robert and Jill Siddall  
Elwood L. Smith  
Estus Smith  
Linda K. Smith  
John and Laura Snyder  
Tom and Linda Sperling  
Darell and Susan Stachelski  
Tom and Melinda Straley  
James L. Strause  
Rhonda and Gregory Swanson  
Kathleen A. Taylor  
William C. Thompson  
Diana and Joseph Tompa  
Jonathan Towne and Rebecca Noreen  
Alice and Philip Trimble  
Cheryl Tschanz and William Newkirk  
Linda J. Tucker  
Matthew S. Underwood  
Dianne Vars  
Venu Vemuri  
Lisa Ventura  
Matthew Vitale  
Barbara J. Waite  
Cheryl and Raymond Waldman  
Jeffrey and Debra Walker  
Sarah F. Ward  
Sally and Mark Watson  
Daniel Weiss  
John and Mary Whalin  
Allen and Cheryl White  
Lloyd and Barbara White  
Thelma J. Wilcox  
Dolores Wilson  
Lawrence A. Wilson  
Carl Wiuff  
Donna and Richard Wolf  
Blue B. Woman  
Susan M. Wood  
Eric A. Woodhams  
Karen and Danny Wright  
Mark A. Yother  
Joyce R. Zastrow  
Joyce and Larry Zimmerman  
Timothy and Sara Zwickl



# Leadership Circle

Members of the Leadership Circle have contributed lifetime gifts of \$100,000 or more to the Indiana University Jacobs School of Music. We gratefully acknowledge the following donors, whose generosity helps the school reach new heights and build a sound financial framework for the future.

## Over \$10,000,000

The Estate of Barbara M. Jacobs  
David H. Jacobs

The DBJ Foundation  
Lilly Endowment, Inc.

## Over \$1,000,000

Louise Addicott-Joshi and Yatish Joshi  
Gary and Kathy Anderson  
The Estate of Ione B. Auer  
Cook, Inc.  
Dorothy Richard Starling Foundation

The Estate of Juanita M. Evans  
Georgina Joshi Foundation, Inc.  
Jack and Linda Gill  
Jack\* and Dora Hamlin  
Krannert Charitable Trust

The Estate of Juana Mendel  
The Estate of Clara L. Nothhacksberger  
The Estate of Paul and Anne Plummer

## \$500,000 - \$999,999

Arthur R Metz Foundation  
Alexander S. Bernstein  
Jamie Bernstein  
Nina Bernstein Simons  
The Estate of George A. Blique, Jr.  
Jack and Pam Burks  
Carl and Marcy Cook

Gayle T. Cook  
The Estate of Frederick G. and Mary M.  
Freeburne  
Wilbert W. Gasser\* and Mary Kratz Gasser  
Ann and Gordon Getty  
The Estate of Eva M. Heinitz  
Sandy Littlefield

Robert R. O'Hearn  
Murray and Sue Robinson  
Richard and Barbara Schilling  
The Estate of Eva Sebok  
The Estate of Ruth E. Thompson  
The Estate of Herman B Wells

## \$250,000 - \$499,999

Jamey and Sara Aebersold  
The Estate of Wilfred C. Bain  
Olimpia F. Barbera  
The Estate of Angeline M. Battista  
Beatrice P. Delany Charitable Trust  
The Estate of Sylvia F. Budd  
The Estate of Marvin Carmack  
Christel DeHaan Family Foundation  
Christel DeHaan  
The Estate of Alvin M. Ehret, Jr.  
The Estate of Lucille de Espinosa  
The Estate of Richard E. Ford  
The Estate of Frederick G. Freeburne  
Rusty and Ann Harrison  
The Estate of Emma B. Horn

IBM Global Services  
Irwin-Sweeney-Miller Foundation  
The Estate of Harold R. Janitz  
Monika and Peter Kroener  
Shalin C. Liu  
The Estate of Jeanette Calkins Marchant  
The Estate of Nina Neal  
Presser Foundation  
The Estate of Ben B. Raney  
Joy and Rudolph\* Rasin  
The Estate of Virginia Schmucker  
The Estate of Lee E. Schroeder  
Scott C. and Kay Schurz  
The Estate of Maidee H. Seward  
Bren Simon

The Cynthia L. & William E. Simon, Jr.  
Foundation  
Cynthia L. and William E. Simon  
David and Jacqueline Simon  
Deborah J. Simon  
Herbert and Porntip Simon  
The Estate of Melvin Simon  
The Estate of Samuel and Martha Siurua  
Paul and Cynthia Simon Skjold  
Summer Star Foundation for Nature, Art  
and Humanity, Inc.  
Marianne W. Tobias  
The Estate of John D. Winters

## \$100,000 - \$249,999

The Estate of Ursula Apel  
Artur Balsam Foundation  
The Estate of Robert D. Aungst  
Robert Barker and Patsy Fell-Barker  
Henry J. Bode and Susan Cardland-Bode  
Bennet and Cynthia Brabson  
Brabson Library and Education Foundation  
The Estate of Jean R. Branch  
The Estate of Mildred J. Brannon  
The Estate of Frances A. Brockman  
The Estate of Aileen Chirwood  
Cole & Kate Porter Memorial Graduate  
Fellowship in Music Trust  
Jean and Doris Creek  
The Estate of Mavis M. Crow  
Susie J. Dewey  
The Estate of M. Patricia Doyle  
The Estate of William H. Earles  
The Estate of Robert A. Edwards  
Marianne V. Felton

Ford Meter Box Foundation, Inc.  
The Estate of Thomas L. Gentry  
Georgia Wash Holbeck Living Trust  
Paul and Ellen Gignilliat  
The Estate of Monroe A. Gilbert  
The Estate of Theodore C. Grams  
The Estate of Marjorie Gravit  
The Estate of David C. Hall  
Steve and Jo Ellen Ham  
The Estate of Margaret H. Hamlin  
Robert and Sandra Harrison  
Harrison Steel Castings Company  
F. Michael and Skaidrite Hatfield  
The Estate of Jascha Heifetz  
Joan & Marvin Carmack Foundation  
Ruth E. Johnson  
Ted W. Jones  
The Estate of Eugene Knapik  
Robert and Sara LeBien  
George William Little, Jr. and B. Bailey Little

P. A Mack, Jr.  
David and Neill Marriot  
Susann H. McDonald  
The Estate of Margaret E. Miller  
The Estate of Elisabeth P. Myers  
The Estate of Jean P. Nay  
The Estate of Richard J. Osborn  
Penn Asset Equity LLC  
The Estate of Charlotte Reeves  
The Estate of William D. Rhodes  
The Estate of Dagmar K. Riley  
Stephen Russell and Mag Cole Russell  
Fred and Arline Simon  
Smithville Telephone Company, Inc.  
The Estate of Maxine M. Talbot  
Technicolor USA, Inc.  
The Estate of Alice C. Thompson  
The Estate of Mary C. Tilton  
Mary H. Wennerstrom and Leonard M.  
Phillips\*

# The Legacy Society

The Legacy Society at the Indiana University Jacobs School of Music honors the following individuals who have included the Jacobs School as a beneficiary under their wills, trusts, life insurance policies, retirement plans, and other estate-planning arrangements.

David\* and Ruth Albright

Richard and Ann Alden

Gary and Kathy Anderson

John and Adelia Anderson

Margaret K. Bachman

Dennis and Virginia Bamber

Mark and Ann\* Bear

Christa-Maria Beardsley

Michael E. Bent

Julian M. Blumenthal

Richard and Mary Bradford

W. Michael Brittenback and William

Meezan

Pamela S. Buell

Louise Caldwell\*

Gerald and Elizabeth Calkins

Marvin Carmack\*

Sarah Clevenger

Jack and Claire Cruse

Doris\* and John\* Curran

D. Michael Donathan

Luba Dubinsky

Stephany A. Dunfee

Sandra Elkins

H. C. Engles

Eleanor R. Fell\*

Michael J. Finton

Debra Ford

Frederick\* and Mary\* Freeburne

Donald and Marcella Gercken

Ken W. Grandstaff\*

Jonathan L. Gripe

Jack\* and Dora Hamlin

Charles Handelman

James R. Hasler

Helen I. Havens\*

David M. Holcenberg

Julian L. Hook

William T. And Kathryn\* Hopkins

David E. Huggins

Harriet Ivey

Walter\* and Bernice\* Jones

Myrna M. Killey

Martha Klemm

Herbert Kuebler and Phil Evans

C. Ray and Lynn Lewis

Harlan L. Lewis and Doris F. Wittenburg

Nancy Liley

Ann B. Lilly

George and Brenda Little

P. A. Mack, Jr.

Jeanette Calkins Marchant\*

Charles J. Marlatt

Kent and Susan McCray

Douglas McLain

Donald and Sonna Merk

Robert A. Mix

Cyndi Dewees Nelson and Dale Nelson

Del and Letty Newkirk

Fred Opie and Melanie S. Spewock

Richard\* and Eleanor\* Osborn

Arthur Panousis\*

John and Margaret Parke

Gilbert\* and Marie\* Peart

Jean and Charles\* Peters

Mary H. Wennerstrom and Leonard M.

Phillips\*

Jack W. Porter

Nancy Gray Puckett

Stanley E. Ransom

Clare G. Rayner\*

Al and Lynn Reichle

Gwyn and Barbara Richards

Ilona Richey

Murray and Sue Robinson

D. Patricia and John W.\* Ryan

Roy and Mary Samuelsen

George P. Sappenfield\*

Vicki J. Schaeffer

John and Lorna Seward

Odette F. Shepherd

Curt and Judy Simic

Donald G. Sisler\*

Catherine A. Smith

George P. Smith, II

Steve and Mary Snider

William and Elizabeth Strauss

Robert D. Sullivan

Hans\* and Alice M. Tischler

Jeffrey S. Tunis

Henry and Celicia Upper

Nicoletta Valletti

Robert Waller and Linda Bow

Patrice M. Ward-Steinman

Charles and Kenda\* Webb

Michael D. Weiss

Robert E.\* and Patricia L. Williams

Michael J. Williamson and Kathy Weston

\* Deceased



# Friends of Music Honor Roll

## Calendar Year 2015

The mission of the Society of the Friends of Music is to raise scholarship funds for deserving, talented students at the Indiana University Jacobs School of Music. The society was established in 1964 by a small group led by Herman B Wells and Wilfred C. Bain. We are pleased to acknowledge outright gifts made between January 1, 2015, and December 31, 2015.

### *Guarantor Scholarship Circle*

#### Cole Porter

— \$5,000 - \$9,999 —

Nelda M. Christ\*  
Susie J. Dewey

Jeanette Calkins Marchant\*

#### *Friends of Music*

— \$10,000 and Above —

Eleanor F. Byrnes  
Jeanette Calkins Marchant\*

The Estate of Ben B. Raney

— \$5,000 - \$9,999 —

Robert Barker and Patsy Fell-Barker  
Joshua D. Bell

Susie J. Dewey  
Steve and Jo Ellen Ham

Richard and Barbara Schilling  
Karen Shaw

### *Herman B Wells Circle*

#### Gold

— \$2,500 - \$4,999 —

Nelda M. Christ\*  
John H. Heiney\*  
Lawrence and Celeste Hurst

Herbert Kuebler and Phil Evans  
Julia and Charles McClary

President Michael A. McRobbie and First  
Lady Laurie Burns McRobbie  
Murray and Sue Robinson

#### Silver

— \$1,000 - \$2,499 —

Ruth Albright  
Diana and Rodger Alexander  
James and Susan Alling  
John and Teresa Ayres  
W. Leland and Helen M. Butler  
William and Anita Cast  
Edward S. Clark  
Gayle K. Cook  
Jean and Doris Creek  
Frank Eberle and Cathy Cooper  
Harvey and Phyllis Feigenbaum  
Anne T. Fraker  
Jim and Joyce Grandorf

Robert R. Greig  
Peter P. Jacobi  
Cecily Jenkins  
Jennifer A. Johnson  
Susan M. Klein and Robert Agranoff  
George and Cathy Korinek  
Terry Loucks  
Cyndi Dewees Nelson and Dale Nelson  
Del and Letty Newkirk  
Alan, Shelley, and Kelsey Newman  
Lenny and Lou Newman  
Ora H. Pescovitz, M.D.  
Gunther and Doris Rodatz

Judith L. Schroeder and Edward Mongoven  
Phyllis C. Schwitzer  
Curtis and Judy Simic  
L. Robert and Sylvia Stohler  
Gregg and Judy Summerville  
Susan B. Wallace  
Eric Weisstein  
Miki C. Weisstein  
J. William Whitaker, M.D. and Joan M.  
Whitaker  
Barbara L. Wolf and Robert J. Goulet, Jr.  
Galen Wood

\*Deceased

# Dean Wilfred C. Bain Circle

## Patrons

### — \$500 - \$999 —

James and Ruth Allen  
Gary and Kathy Anderson  
Margaret K. Bachman  
Olimpia F. Barbera  
Jack and Pam Burks  
Carter and Allyson Cast  
Charles and Helen Coghlan  
Vivian L. Counts  
Mary A. Cox and James M. Koch  
Dr. and Mrs. Fred W. Dahling  
Carol J. Dilks  
James V. and Jacqueline C. Faris  
Robert and Ann Harman  
Carter and Kathleen Henrich  
Elizabeth J. Hewitt and Richard H. Small  
Richard and Lois Holl

Athena and Frank\* Hrisomalos  
Jeffrey and Lesa Huber  
Diane S. Humphrey  
Linda and Kenneth Kaczmarek  
Martin and Linda Kaplan  
Vicki and Thomas King  
Howard and Linda Klug  
Jhani Laupus and Michael M. Sample  
Judith A. Mahy-Shiffrin and Richard M. Shiffrin  
Eugene O'Brien  
Edward and Patricia O'Day  
Stephen R. Pock and David Blumberg  
John and Lislott Richardson  
Edward and Janet Ryan  
L. David Sabbagh and Linda L. Simon

Randy Schekman and Nancy Walls  
Marilyn F. Schultz  
Scott C. and Kay Schurz  
Anthony and Jan Shipp  
Lee Ann Smith and Mark C. Webb  
Kathryn and Alan Somers  
William and Anna Stewart  
Bruce and Shannon Storm  
Ellen Strommen  
Henry and Celicia Upper  
Martha F. Wailes  
Mary H. Wennerstrom and Leonard M. Phillips\*  
Doris F. Wittenburg and Harlan L. Lewis  
Judith and Steven Young  
John and Linda Zimmermann

## Sustainers

### — \$300 - \$499 —

Shirley Bell  
Gerald and Elizabeth Calkins  
James and Carol Campbell  
Sarah Cleveger  
Karen-Cherie Cogane and Stephen Orel  
Bart and Cinda S. Culver  
Lee and Eleanor Dodge  
Sterling and Melinda Doster  
Beth and John Drewes  
Donald and Sandra Freund  
Michael and Patricia Gleeson  
Jay and Sandra Habig

Ralph E. Hamon, Jr.  
R. Victor Harnack  
John B. Hartley and Paul W. Borg, Ph.D.  
Lenore S. Hatfield  
Steven L. Hendricks  
Ernest N. Hite and Joan E. Pauls  
Margaret and Donald Jones  
Monika and Peter Kroener  
Ayelet E. Lindenstrauss and Michael J. Larsen  
P. A. Mack, Jr.  
David and Catherine Martin  
James L. McLay

Geraldine and John Miller  
Dawn E. Morley  
Roger and Ruth Newton  
Carl B. Rexroad and Carol Pierce  
Kathleen C. Ruesink  
Linda Strommen  
Lewis H. Strouse  
Kenneth and Marcia VanderLinden  
Philip and Shandon Whistler  
Patricia L. Williams  
Jerry and Joan Wright

## Donors

### — \$100 - \$299 —

Evelyn and Richard Anderson  
Carolyn A. Bailey  
Donna M. Baiocchi  
Elizabeth Baker and Richard Pugh  
Mark J. Baker  
David and Judith Barnett  
Patricia and Robert Bayer  
Mark K. Bear  
Thomas Beddow  
David and Ingrid Beery  
Sharon M. Berenson  
Eva and Ernest Bernhardt-Kabisch  
Norma B. Beversdorf-Rezits and Joseph M. Rezits  
Richard E. Bishop  
Ellen R. Boruff  
P. Delbert Brinkman, Ph.D., and Carolyn L. Brinkman  
Jaclyn and Bill Brizzard  
Susan E. Burk  
Ann F. Burke  
Derek and Marilyn Burleson  
Cathleen Cameron  
Beatrice and Gerald Carlyss  
Gayle and Robert Chesebro  
Donald and Shirley Colglazier  
Ann L. Connors  
David Crandall and Saul Blanco  
Jeffrey L. Davidson and Pamela Jones Davidson

Julia DeHon  
Jason Derrick  
Susan and Dominic\* Devito  
Deborah Divan  
David and Jennie Drasin  
David A. Drinkwater  
Danny and Jeanette Duncan  
J. Michael and Sarah Dunn  
David and Arlene Effron  
Stephen A. Ehrlich  
Peter and Pearl Ekstrom  
Mary K. Emison  
Richard and Susan Ferguson  
Robert and Geraldine Ferguson  
Steve and Connie Ferguson  
Joseph P. Fiacable  
George and Jo Fielding  
Bruce and Betty Fowler  
Sharon and Norman Funk  
Bernardino and Caterina Ghetti  
Jeffrey and Toby Gill  
Elizabeth and Robert Glassey  
Constance and James Glen  
Vincent M. Golik  
Robert D. Goyette  
Henry H. Gray  
Robert A. Green  
Diane and Thomas Gregory  
Jerry and Linda Gregory  
Samuel and Phyllis Guskin

Kenneth and Judy Hamilton  
Stanley and Hilary Hamilton  
Andrew J. Hanson and Patricia L. Foster  
Kenneth and Janet Harker  
Pierrette Harris  
Robert and Emily Harrison  
James Richard Hasler  
Carol L. Hayes  
Barbara J. Henn\*  
Sandra L. Hertling\*  
Allison T. Hewell  
John D. Hobson  
Rona Hokanson  
Norman and Judy Holy  
Takeo and Tamaki Hoshi  
Roger and Carol Isaacs  
Warren W. Jaworski  
Margaret T. Jenny and John T. Fearnside  
Anna L. Jerger  
Martin D. Joachim  
Keith and Doris Johnson  
Lora D. Johnson  
Burton and Eleanor Jones  
Gwen J. Kaag  
Marilyn J. Keiser  
Patricia C. Keller  
Janet Kelsay  
Marilyn J. Kelsey  
Thomas and Mary Kendrick  
Christopher and Arlene Kies

Charles C. Knox  
 Maryann Kopelow  
 Ronald and Carolyn J. Kovener  
 Mary M. Kroll  
 Eric C. Lai and Grace Lok  
 Yvonne Lai and Kenneth P. Mackie  
 David and Suzanne Larsen  
 Joan B. Lauer  
 John and Julia Lawson  
 Debra L. Lay-Renkens and Kenneth L. Renkens  
 Katherine C. Lazerwitz  
 Edoardo A. Lebano  
 Diana R. Lehner  
 Louis and Myrna Lemberger  
 Ann W. Lemke  
 Leslie and Kathleen Lenkowsky  
 Lesley and Mark Levin  
 Andrew and Sandra Levy  
 Mitzi A. Lewison  
 Carolyn R. Lickerman  
 Marie E. Libal-Smith and David K. Smith  
 Virginia K. Long-Cecil and Carroll B. Cecil  
 Peter and Carol Lorenzen  
 Pamela Williamson Lowe and David C. Lowe  
 Bill and Ellie Mallory  
 Mayer and Ellen Mandelbaum  
 Daniel J. Marcacci  
 Nancy G. Martin  
 Perry J. Maull  
 Howard D. Mehlinger  
 Linda M. Mintener and Robert M. Jones  
 G. Scott Mitchell and Rosalind Burwell  
 Steve and Sandra Schultz Moberly  
 Michael H. Molenda, Ph.D., and Janet C. Stavropoulos, Ph.D., J.D.  
 Gerald L. and Anne Klock Moss  
 Patricia and John Mulholland  
 Marcia M. Nagao

Frank and Nancy Nagler  
 Roxana Nagosky  
 Heather and Daniel Narducci  
 Ambrose Ng  
 Evelyn M. Niemeyer  
 David and Barbara Nordloh  
 Marilyn F. Norris  
 Edward and Soili Ochsner  
 Wesley and Patricia Oglesby  
 Harold and Denise Ogren  
 Joan C. Olcott  
 Richard and Jill Olshavsky  
 Dennis and Lynette Organ  
 Suzann Mitten Owen  
 J. Patrick and Margaret Page  
 Harlan and Joanna Peithman  
 Linda and David Pennebaker  
 Dorothy L. Peterson  
 Harriet S. Pfister  
 Fred A. Place  
 Lois S. Pless  
 Raymond A. Polstra  
 Gary and Christine Potter  
 Frona and Ron Powell  
 Raymond and Eileen Prose  
 Earl and Dorothy Prout  
 Betty Posson Rieger  
 Roger and Tiuu Robison  
 Jerry and Nancy Ruff  
 Ruth L. Rusie  
 James and Helen Sauer  
 Nancy and Fredric Schroeder  
 Richard C. Schutte  
 Lisa M. Scrivani-Tidd and Roderick Tidd  
 Richard Searles  
 Herbert A. Seltz  
 John and Lorna Seward  
 David and Barbara Sheldon  
 J. Robert Shine

Rebecca and John Shockley  
 Richard and Denise Shockley  
 Janet A. Shupe  
 Michael A. Simkowitz  
 Michael P. Slon  
 Catherine A. Smith  
 Eliot and Pamela Smith  
 Janet S. Smith  
 Marvin K. Smith  
 John and Laura Snyder  
 Stephen T. Sparks  
 Viola J. Spencer  
 Stanley and Cynthia Springer  
 Robert and Cynthia St. Leger  
 David and Alice Starkey  
 Malcolm and Ellen Stern  
 Robert and Virginia Stockton  
 Bill and Gayle Stuebe  
 Paula W. Sunderman  
 Yasuoki Tanaka  
 Jeffrey R. Tanski  
 Sandra B. Taylor  
 Charlotte H. Templin  
 Linda J. Tucker  
 William and Jane Volz  
 Sharon P. Wagner  
 Judith Walcoff  
 George L. Walker and Carolyn M. Lipson-Walker  
 Donovan R. Walling and Samuel B. Troxal  
 Charles H. Webb  
 Frances and Eugene Weinberg  
 Kay and Ewing Werlein  
 Roger and Barbara Wesby  
 G. Cleveland and Frances Wilhoit  
 James and Ruth Witten  
 Sara and Thomas Wood  
 Virginia A. Woodward

## Corporations and Foundations

Avery & Greig, LLP  
 Cook Polymer Technology  
 Five Star Quality Care, Inc.  
 Fred A. Place Accounting LLC, PA

Georgianna E. Marks Trust  
 Indiana Charitable Trust  
 Jeffrey Lim MD INC  
 Joshua Bell, Inc.

OneAmerica Financial Partners, Inc.  
 United Technologies Corporation

## Companies Providing Matching Gifts

Eli Lilly & Company  
 Fidelity Charitable Gift Fund

## Planned Gifts

We are grateful to those individuals who have expressed their interest in ensuring scholarship support for tomorrow's students today by making a planned gift through a testamentary gift in their estate planning by a will or trust, charitable gift annuity, or retirement plan. We are pleased to acknowledge those individuals who have provided gift documentation.

David\* and Ruth Albright  
 Margaret K. Bachman  
 Mark and Ann\* Bear

Marvin Carmack\*  
 Jeanette Calkins Marchant\*  
 Cyndi Dewees Nelson and Dale Nelson

Jean and Charles\* Peters  
 Curt and Judy Simic  
 Jeffrey S. Tunis

*\*Deceased*

# Endowments and Scholarships

The IU Jacobs School of Music gratefully acknowledges those individuals, corporations, and foundations that provide support through endowments and scholarships. The generosity and goodwill of those listed below put a Jacobs School of Music education within the reach of many. To learn more about investing in our talented students, please contact Melissa Dickson, director of development, via email at [dickson9@indiana.edu](mailto:dickson9@indiana.edu) or by phone at 812-855-4656.

## *Jacobs School of Music*

William Adam Trumpet Scholarship  
Valerie Adams Memorial Scholarship  
Jamey Aebersold Jazz Combo Fund  
Jamey and Sara Aebersold Jazz Fellowship  
Gary J. and Kathy Z. Anderson Scholarship in Music Excellence  
Kathy Ziliak Anderson Chair in Ballet  
Willi Apel Early Music Scholarship Fund  
Aronoff Percussion Scholarship  
Martha and Fred Arto Music Scholarship  
Aungst Scholarship  
Stephen A. Backer Memorial Scholarship  
Dr. Wilfred C. Bain Music Alumni Association Scholarship  
Wilfred C. Bain Opera Scholarship Endowment  
David N. Baker Jazz Scholarship  
David N. Baker Visiting Artist Series  
David Baker, Jr. Jazz Scholarship  
Artur Balsam Chamber Music Project  
Band Centennial Fund  
Anthony and Olimpia Barbera Latin American Music Scholarship  
Olimpia Barbera Recording Fund for the Latin American Music Center  
Earl O. Bates Memorial Scholarship  
Eric D. Batterman Memorial Scholarship  
Joseph Battista Memorial Fund  
"Because You Want To Be Here" Scholarship  
Achasa Beechler Music Scholarship Fund  
William Bell Memorial Fund  
Colleen Benninghoff Music Scholarship  
Leonard Bernstein Scholarship  
John E. Best Scholarship  
Thomas Beversdorf Memorial Scholarship  
The Harriett Block Operatic Scholarship  
Mary R. Book Music Scholarship Fund  
Ruth Boshkoff Scholarship  
Fred Wilkins and Richard W. Bosse Flute Scholarship  
Julia Beth Brabson Memorial Fellowship  
Julia Brabson Scholarship  
Brass Instrument Scholarship  
W. Michael Brittenback and William Meezan Organ Scholarship  
Frances A. Brockman Scholarship  
A. Peter and Carol V. Brown Research Travel Fund  
Kenneth V. & Audrey N. Brown Memorial Scholarship  
Alonzo and Mary Louise Brummett Scholarship in Music  
Sylvia Feibelman Budd and Clarence Budd Scholarship  
Marjorie J. Buell Music Scholarship  
Pamela Buell Music Scholarship  
Vivian N. Humphreys Bundy Memorial Scholarship Fund  
Peter Burkholder and Doug McKinney Musicology Fund  
Pam and Jack Burks Professorship  
Elizabeth Burnham Music Instrument Maintenance Fund  
Dorothy Knowles Bush and Russell Jennings Bush Piano Scholarship  
The Camerata Scholarship  
John and June Canfield Bloomington Pops Scholarship  
Joan and Marvin Carmack Scholarship  
Robert L. Carpenter Fund  
Charles Diven Campbell Piano Scholarship  
Susan Cartland-Bode Performance Excellence Scholarship  
Susan Cartland-Bode Scholarship  
Walter Cassel Memorial Scholarship  
Austin B. Caswell Award  
Center for the History of Music Theory and Literature Endowment Fund  
Alan Chepregi Memorial Scholarship  
Emma H. Claus Scholarship Fund  
Choral Conducting Department Enhancement Fund  
Lucy and Samuel Chu Piano Scholarship  
Cook Band Building Fund  
Patricia Sorenson Cox Memorial Scholarship  
Ray E. Cramer Graduate Scholarship  
Ray Cramer Scholarship  
Jean and Doris Creek Scholarship in Trumpet  
Donna and Jean Creek Scholarship  
Donna and Jean Creek Scholarship in Voice  
Mavis McRae Crow Music Scholarship Fund  
T.F. Culver and Emma A. Culver Scholarship Fund  
Jeanette Davis Fund  
Pete Delone Memorial Scholarship  
Alfonso D'Emilia Scholarship Fund  
Department of Musicology Fund  
Gayl W. Doster Scholarship in Music  
Rostislav Dubinsky Music Scholarship  
Fred Ebbs Memorial Scholarship  
David Eissler Memorial Scholarship Fund  
Ruth L. Elias Scholarship Fund  
Guillermo Espinosa Endowment Fund  
Merle Evans Scholarship  
Fairview Elementary School String Project  
Fairview Elementary School String Project II  
Philip Farkas Horn Scholarship  
Eleanor Fell Scholarship  
Rose and Irving Fell Violin Scholarship  
Five Friends Master Class Series  
Ford-Crawford Recital Hall Maintenance Fund  
Frederick A. Fox Composition Scholarship  
William and Marcia Fox Scholarship in Music  
Dr. Frederick and Mary Moffatt Freeburne Teaching Fellowship  
Janie Fricke Scholarship Fund for Aspiring Musicians  
The Friday Musicale Scholarship  
J.N. Garton Memorial Scholarship  
Glenn Gass Scholarship  
Bill and Mary Gasser Scholarship/Fellowship Endowment  
Lynn E. Gassaway-Reichle Chair in Piano  
Robert Gatewood Opera Fund  
Cary M. Gerber Scholarship Fund  
Marcella Schahfer Gercken Band Scholarship  
Richard C. Gigax Memorial Scholarship Fund  
Gignilliat Music Scholarship Fund  
Ellen Cash Gignilliat Fellowship  
Linda C. and Jack M. Gill Chair in Violin  
Linda Challis Gill and Jack M. Gill Music Scholarship  
Gladys Gingold Memorial Scholarship  
Josef Gingold Violin Scholarship Fund  
Charles Gorham Trumpet Scholarship  
St. Luke's UMC/Goulding and Wood Organ Scholarship  
Martin Eliot Grey Scholarship  
Montana L. Grinstead Fund  
Arthur and Ena Grist Scholarship Fund  
Murray Grodner Double Bass Scholarship  
Wayne Hackett Memorial Harp Scholarship Fund  
Jack I. & Dora B. Hamlin Endowed Chair in Piano  
Margaret H. Hamlin Scholarship  
Judith Hansen-Schwab Singing Hoosiers Scholarship  
Margaret Harshaw Scholarship  
Russell A. Havens Music Scholarship  
Bernhard Heiden Scholarship  
Jascha Heifetz Scholarship

Eva Heinitz Cello Scholarship Fund  
 William Gammon Henry, Jr. Scholarship  
 Julius and Hanna Herford Fund for Visiting Scholars and Conductors  
     in Choral Music  
 Dorothy L. Herriman Scholarship Fund  
 Mark H. Hindsley Award for Symphonic Band  
 Mark H. Hindsley Endowed Fund for Symphonic Band  
 Historical Performance Institute Fund  
 Ernest Hoffzammer Scholarship  
 Leonard Hokanson Chamber Music Scholarship  
 Georgia Wash Holbeck Fellowship  
 Julian Hook Music Fund  
 Julian Hook Music Theory Fund  
 William S. and Emma S. Horn Scholarship Fund  
 Harry and Ruth Houdeshel Memorial Flute Scholarship  
 Bruce Hubbard Memorial Scholarship  
 Dwan Hublar Music Education Scholarship  
 Lawrence P. Hurst Medal in Double Bass  
 IU Children's Choir Fund  
 International Harp Competition  
 Barbara and David Jacobs Fellowship  
 Barbara and David Jacobs Scholarship  
 Barbara and David Jacobs School of Music Enhancement Fund  
 David H. Jacobs Chair in Music  
 David Henry Jacobs International Overseas Study Scholarship  
 David Henry Jacobs Music Scholarship  
 Jacobs Bicentennial Scholars and Fellows in Honor of Charles H. Webb  
 Jacobs Endowment in Music  
 Jacobs School of Music International Overseas Study Scholarship  
 Eva Janzer Memorial Fund  
 Jazz Double Bass Studio Fund  
 Wilma Jensen Organ Scholarship  
 Ted Jones and Marcia Busch-Jones Musical Arts Center Fund  
 Ted Jones Musical Arts Center Executive Director of Production Fund  
 Georgina Joshi Composition Commission Award  
 Georgina Joshi Fellowship  
 Georgina Joshi Fund  
 Georgina Joshi Handelian Performance Fund  
 Georgina Joshi International Fellowship  
 Georgina Joshi Recording Arts Studio Fund  
 Walter and Freda Kaufmann Prize in Musicology Fund  
 Mack H. Kay Scholarship for Excellence in Jazz Composition Fund  
 Marilyn Keiser Organ Scholarship  
 Martin Luther King, Jr. Scholarship  
 Klinefelter Scholarship Fund  
 Eugene J. and Eleanor J. Knapik Fund  
 Lucie M. Kohlmeier Music Scholarship in Voice  
 Robert Kraus Memorial Scholarship  
 Peter and Monika Kroener Dean's International Fellowship in Music  
 George and Elizabeth Krueger Scholarship  
 Herbert O. Kuebler Music Fellowship  
 Michael Kuttner Musical Education Fund  
 Robert LaMarchina Music Scholarship  
 Latin American Music Center Fund  
 James and Kathie Lazerwitz Visiting Artists Fund  
 Sara and Robert LeBien Jacobs School of Music Scholarship  
 Sara J. and Robert E. Lebien Scholarship  
 Lewis Family Scholarship in Music  
 Martha Lipton Scholarship  
 Jay Lovins Memorial Scholarship Fund  
 Ethel Louise Lyman Memorial Fund  
 P.E. MacAllister Scholarship in Voice  
 John Mack Memorial Scholarship in Oboe  
 Virginia MacWatters Abee Scholarship  
 Jeanette Calkins Marchant Friends of Music Scholarship  
 Marching Hundred Hall Fund  
 Wilda Gene Marcus Piano Scholarship  
 Jay Mark Scholarship in Music  
 Georgia Marriott Scholarship  
 Arthur W. Mason Musical Scholarship Fund  
 Perry Maull Student Travel Fund  
 Mary Justine McClain Opera Theater Fund  
 Susan Sukman McCray Scholarship  
 Susann McDonald Fund  
 Susann McDonald Harp Study Fund  
 Katherine V. McFall Scholarship  
 Bernardo and Johanna Mendel Graduate Scholarship for the  
     School of Music  
 Menke/Webb/Sturgeon, Inc. Fund  
 B. Winfred Merrill Scholarship Fund  
 Lou and Sybil Mervis String Quartet Fund  
 Arthur R. Metz Carillonneur Fund  
 Arthur R. Metz Organ Department Fund  
 Otto Miessner Memorial Music Scholarship Fund  
 Nathan A. and Margaret Culver Miller Memorial Scholarship Fund  
 Dorothy Hoff Mitchell Scholarship  
 Peter Steed Moench Scholarship  
 Jack and Marilyn Moore Graduate Flute Fellowship  
 Marcel Mule Scholarship Fund  
 Music Dean's Dissertation Prize Endowment Fund  
 Music Library Fund  
 Music Theory Fund  
 Nellie Woods Myers Scholarship  
 Ben Nathanson Scholarship  
 Nina Neal Scholarship Fund  
 Robert Erland Neal Music Scholarship  
 Otto Nothhacksberger Endowed Chair  
 Otto Nothhacksberger Memorial Fund  
 On Your Toes Fund  
 Opera Illinois League Scholarship  
 Bernard Opperman Memorial Fund  
 Organ Department Fund  
 Juan Orrego-Salas Scholarship  
 Namita Pal Commemorative Award  
 Jason Paras Memorial Fund  
 Marie Alice and Gilbert Peart Scholarship  
 James & Helen Pellerite Flute Scholarship  
 Jackie Pemberton Memorial Scholarship Fund  
 Doris Klausung Perry Scholarship  
 Harvey Phillips Memorial Scholarship  
 Harvey Phillips Tuba-Euphonium Quartet Composition Contest  
 Walter and Rosalee Pierce Scholarship in Organ  
 Ildebrando Pizzetti Memorial Scholarship Fund  
 Cole and Kate Porter Memorial Scholarship  
 George E. Powell, III Scholarship  
 Pre-College Ballet Scholarship  
 The Presser Foundation Scholarship and the Presser Music Award  
 Project Jumpstart Fund  
 Garry Lee and Nancy Gray Puckett Scholarship  
 Mary and Oswald G. Ragatz Organ Scholarship  
 Stanley Ransom Scholarship in Voice  
 Robert C. Rayfield Memorial Scholarship  
 RedStepper Fund  
 RedStepper Scholarship  
 Charlotte Reeves Chamber Music Endowment Fund  
 Albert L. and Lynn E. Reichle Scholarship in Music  
 Albert L. Reichle Chair in Trumpet  
 Dorothy Rey Scholarship  
 The Sally W. Rhodes Scholarship  
 Gwyn and Barbara Richards Family Scholarship  
 Gwyn Richards Scholarship  
 Agnes Davis Richardson Memorial Scholarship Fund  
 John P. Richardson Jr. Violin Scholarship  
 The Naomi Ritter Scholarship  
 Walter and Dorothy Robert Scholarship Fund  
 Louise Roth Scholarship  
 Leonard & Maxine Ryan Memorial Fund  
 Rosetta Samaroto Memorial Scholarship  
 Roy and Mary Samuelsen Scholarship  
 Elizabeth Schaefer Memorial Scholarship  
 Richard J. Schilling Collaborative Piano Scholarship in Honor of  
     Charles H. Webb  
 Lee Edward Schroeder Endowed Scholarship  
 Michael L. Schwartzkopf Singing Hoosiers Fund  
 Gyorgy Sebok Scholarship in Piano  
 Ruth Parr Septer Scholarship Fund  
 Maidee H. and Jackson A. Seward Organ Fund  
 Terry C. Shirk Memorial Scholarship Fund  
 Shulz Memorial Fund  
 Singing Hoosiers Endowment  
 Singing Hoosiers Travel Fund  
 Jean Sinor Memorial Lecture Series  
 Jerry E. Strucek Memorial Scholarship  
 Samuel and Martha Siurua Scholarship for the



Susan Slaughter Trumpet Scholarship  
 Janos Starker Cello Scholarship  
 Dorothy Richard Starling Chair in Violin Studies  
 Charlotte Steinwedel Scholarship  
 Evelyn P. Stier Memorial Scholarship Fund  
 Edward M. Stochowicz Memorial Scholarship  
 Douglas and Margaret Strong Scholarship  
 Harry Sukman Memorial Scholarship Fund  
 Robert D. Sullivan Music Scholarship  
 Elsie L. Sweeney Memorial Scholarship  
 The Maxine Rinne Talbot Music Scholarship  
 Donald L. Tavel Memorial Scholarship  
 Elizabeth Schaefer Tenreiro Scholarship Fund  
 Marcie Tichenor Scholarship  
 Mary Coffman Tilton Harpsichord Fellowship  
 Hans and Alice B. Tischler Endowment  
 Giorgio Tozzi Scholarship  
 Trombone Artistic Activity Fund  
 Sarah Joan Tuccelli-Gilbert Memorial Fellowship in Voice  
 Henry A. Upper Chair in Music  
 Andy Upper Scholarship  
 Roe Van Boskirk Memorial Scholarship in Piano Fund  
 Carl G. and Mazelle Van Boskirk Memorial Scholarship Fund  
 Jon Vickers Film Scoring Award  
 Vocal Jazz Ensemble Fund  
 William J. and Betty J. Wampler Scholarship

Dean Charles H. Webb Chair in Music  
 Charles and Kenda Webb Music Excellence Fund  
 Charles H. Webb Music Scholarship  
 Anna Weber Endowment Fund  
 Wennerstrom Music Theory Associate Instructor Fellowship  
 Mary Wennerstrom Phillips and Leonard M. Phillips Endowment  
 Wennerstrom-Phillips Music Library Directorship Endowment  
 Wennerstrom-Phillips Piano Scholarship  
 Allen R. & Nancy A. White Music Scholarship  
 Lawrence R. & Vera L. White Music Scholarship  
 Kenneth C. Whitener Fund for Ballet Excellence  
 Fred Wilkins and Richard W. Bosse Flute Scholarship  
 Camilla Williams Voice Scholarship  
 Robert E. Williams Singing Hoosiers Scholarship  
 Bill and Lenis Williamson Music Scholarship  
 Madge Wilson Music Scholarship Fund  
 Carol A. Winger Memorial Fellowship  
 Marjorie Schlamp Winters Scholarship Fund  
 Janet Corday Won Memorial Scholarship  
 Woodwind and the Brasswind Scholarship Fund  
 Mildred F. Yoder Scholarship  
 Steve Zegree Vocal Jazz Scholarship  
 Avedis Zildjian Percussion Scholarship  
 Asher G. Zlotnik Scholarship  
 Lennart A. von Zveyberg Cello Scholarship

## *The Society of the Friends of Music*

Friends of Music David Albright Memorial Scholarship  
 Friends of Music Robert M. Barker Scholarship in honor of Patsy  
 Fell-Barker  
 Friends of Music Patsy Fell-Barker Scholarship in honor of my family  
 Thomas J. Beddow & Joseph W. Nordloh Memorial Friends of Music  
 Scholarship  
 Alan P. Bell Memorial Friends of Music Scholarship  
 George A. Blique, Jr. Friends of Music Scholarship  
 Eleanor Jewell Byrnes Friends of Music Piano Scholarship  
 Marvin Carmack Friends of Music Scholarship  
 Joan and Marvin Carmack Friends of Music Scholarship  
 Anita Hursh Cast Friends of Music Scholarship  
 Esther Ritz Collyer Piano Scholarship  
 Cristini Friends of Music Scholarship  
 The Patsy Earles Friends of Music Scholarship  
 Robert A. Edwards Friends of Music Scholarship  
 Marianne V. Felton Friends of Music Scholarship in Voice  
 Richard S. and Jeanne Hardy Forkner Friends of Music Scholarship  
 Marjorie F. Gravit Friends of Music Scholarship  
 Marjorie F. Gravit Piano Scholarship

The Rajih and Darlene Haddawi and Kathryn and Scott C. Schurz  
 Scholarship  
 The Rajih and Darlene Haddawi Scholarship  
 The Alice V. Jewell and David B. Mills Friends of Music Scholarship  
 The Karl and Vera O'Lessker Friends of Music Scholarship  
 Mary Jane Reilly Friends of Music Scholarship  
 Dagmar K. Riley Friends of Music Scholarship  
 Samuel E. Ross Friends of Music Scholarship  
 Dr. Richard Schilling-Ruth Tourner Friend of Music Voice Scholarship  
 Scott C. and Kathryn Schurz Friends of Music Scholarship  
 The Scott C. and Kathryn Schurz Latin American Friends of Music  
 Scholarship  
 Mr. and Mrs. Jake Shainberg and Mr. and Mrs. David Newman  
 Friends of Music Scholarship  
 Society of the Friends of Music Fund  
 Society of the Friends of Music of Indiana University Scholarship  
 Ruth E. Thompson Friends of Music Scholarship  
 Kenda Webb Friends of Music Scholarship  
 Ulrich Weisstein Friends of Music Scholarship in Voice  
 Herman B Wells Memorial Friends of Music Scholarship

## IU Opera Theater Production Staff

General Manager . . . . .	Dean Gwyn Richards
Ted Jones Executive Director of Production . . . . .	Timothy Stebbins
Director of Coaching and Music Administration . . . . .	Kevin Murphy
Director of Opera Choruses . . . . .	Walter Huff
Executive Administrator of Instrumental Ensembles . . . . .	Thomas Wieligman
Coordinating Opera Coach . . . . .	Kimberly Carballo
Coach Accompanists . . . . .	Mark Phelps, Schuichi Umeyama Piotr Wisniewski
Production Stage Manager . . . . .	Trevor Regars
Assistant Stage Managers . . . . .	Megan Gray, John Hunter
Technical Director . . . . .	Robert Brown
Assistant Technical Director . . . . .	Christian Schmitt
Director of Paint and Props . . . . .	Mark F. Smith
Properties Manager . . . . .	Gwen Law
Costume Shop Supervisor . . . . .	Dana Tzvetkov
Costume Shop Projects Manager . . . . .	Soraya Noorzad
Wardrobe Supervisor . . . . .	Jenna Kelly
Wigs and Makeup Designer . . . . .	Gary Arave
Head of Lighting . . . . .	Patrick Mero
House Electrician . . . . .	Fritz Busch
Stage Carpenters . . . . .	Ken D'Eliso, Andrew Hastings
Administrative Production Assistant . . . . .	Brenda Stern
Director of Recording Arts . . . . .	Konrad Strauss
Audio Technician . . . . .	Fallon Stillman
Director of Marketing and Publicity . . . . .	Dana Navarro
Publicity and Media Relations Specialist . . . . .	Linda Cajigas
Director of Digital Design . . . . .	Patrick Eddy
Music Programs Editorial Specialist . . . . .	Jonathan Shull
Marketing and Publicity Assistant . . . . .	Sarah Slover
Administrative Assistant . . . . .	Brayton Arvin
Box Office and House Manager . . . . .	Benjamin Harris
Stitchers . . . . .	Jacqueline Westbrook, Sarah Travis Wendy Langdon, Noriko Zulkowski
Costume Shop Assistant . . . . .	Claire Stebbins



# OPERA & BALLET

THEATER 15/16 SEASON

## **The Barber of Seville**

*Rossini*

SEP 18, 19, 25, 26 at 7:30pm

## **Così fan tutte**

*Mozart*

FEB 5, 6, 12, 13 at 7:30pm

## **Fall Ballet**

*Balanchine, Taylor, Tharp*

OCT 2, 3 at 7:30pm

## **Carmen**

*Bizet*

FEB 26, 27 MAR 4, 5 at 7:30pm

## **Dead Man Walking**

*Heggie & McNally*

OCT 16, 17, 23, 24 at 7:30pm

## **Spring Ballet**

*Four Faces of Balanchine*

MAR 25, 26 at 7:30pm

## **Die Fledermaus**

*Strauss Jr.*

NOV 13, 14, 19, 20 at 7:30pm

## **Oklahoma!**

*Rodgers & Hammerstein II*

April 8, 9, 15, 16 at 7:30pm;  
10 at 2pm

## **The Nutcracker**

*Tchaikovsky*

DEC 3, 4, 5 at 7:30pm,  
5 & 6 at 2 pm

## **TICKETS**

Musical Arts Center Box Office  
Monday-Friday, 11:30-5:30  
(812) 855-7433

[music.indiana.edu/operaballet](http://music.indiana.edu/operaballet)



**JACOBS SCHOOL OF MUSIC**

INDIANA UNIVERSITY  
Bloomington

